

# Dynamics GP Toolbox

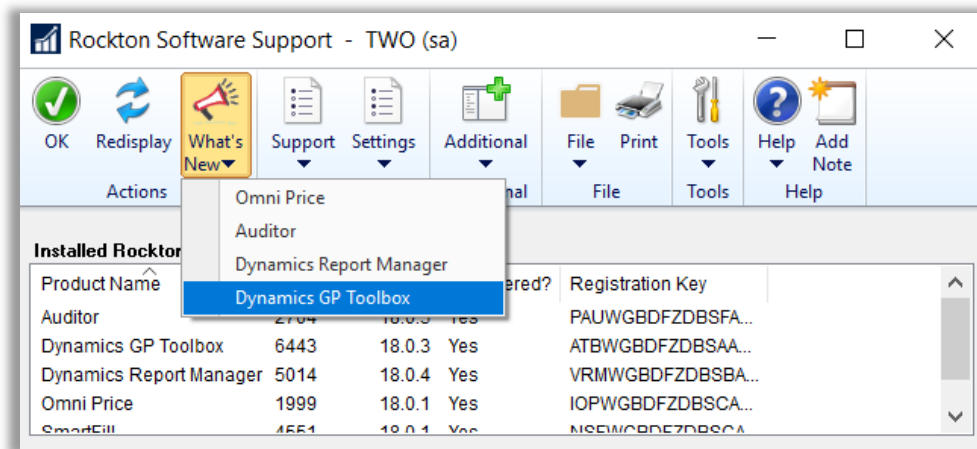
*What's New/July 2020*



## What's New

It's easy to see what new features have been added to Dynamics GP Toolbox by accessing the What's New in Dynamics GP Toolbox document right within Microsoft Dynamics GP.

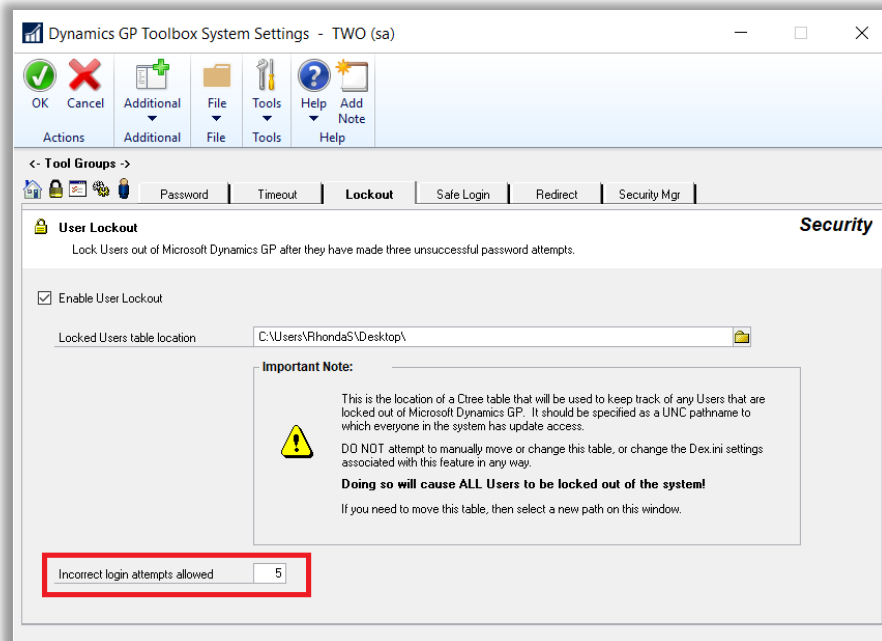
In Microsoft Dynamics GP, go to Help | Rockton Software Support and click the What's New button.



## User Lockout - Set Number of Failed Attempts

Previously, when the User Lockout tool was enabled, a user had three unsuccessful password attempts before being locked out when logging into Dynamics GP. Now, you choose how many attempts you want to allow for the user.

To change the number of attempts, go to Microsoft Dynamics GP | Tools | Setup | Dynamics GP Toolbox | System Settings and double-click User Lockout. If the tool is not already enabled, mark Enable User Lockout.



In the Incorrect login attempts allowed field, enter the number of attempts you wish to allow your users to enter before they are locked out of Dynamics GP. You may enter a number between 1-9 in this field.

You may change this number at any time but be sure to log out of Dynamics GP to capture the change.