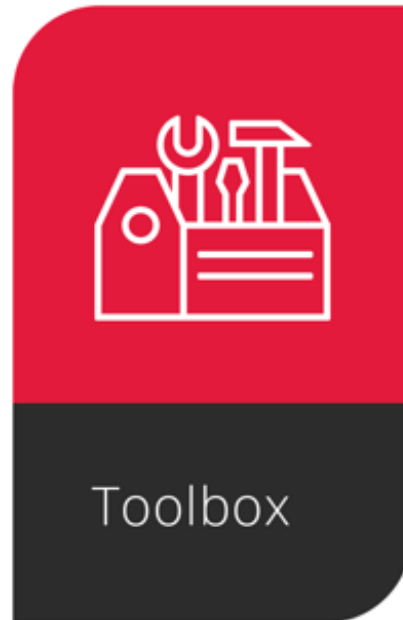


Dynamics GP Toolbox

What's New/April 2022



Multi-Factor Authentication Support

Microsoft Dynamics GP now allows you to use multi-factor authentication (MFA) when sending emails. Auditor has been updated to use this functionality as well when using it in Dynamics GP.

Incorrect Dictionary Notification

With Dynamics GP using a similar build number, such as 18.3 and 18.4, it is now easier to make sure you installed the correct build of Dynamics GP Toolbox. If you load an incorrect Toolbox dictionary, you will receive a message letting you know.



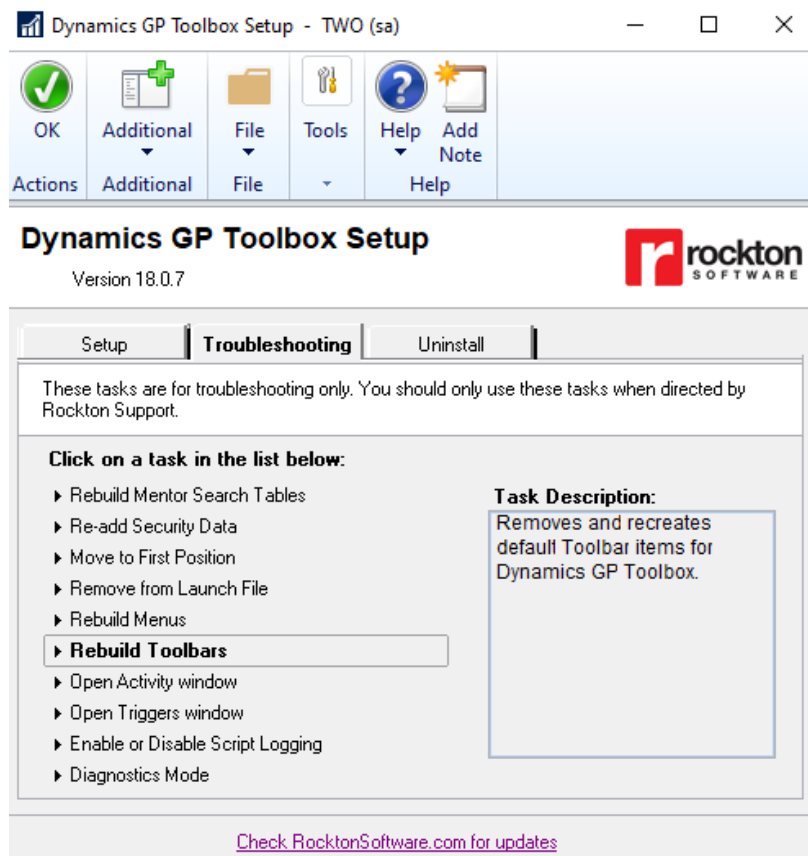
The version of Dynamics GP Toolbox (18.3.4) that you have installed is not compatible with Microsoft Dynamics GP 18.0. Please install a compatible version of Dynamics GP Toolbox.

OK

Simply install the correct version from the download page to resolve the message.

Reset Toolbars

A new option has been added to the Troubleshooting tab in the Dynamics GP Toolbox System Settings window to reset the toolbar for Dynamics GP Toolbox. This is helpful if you find the Toolbar is missing or incomplete. The Rebuild Toolbars option will remove and recreate the Toolbar.



Show Online Companies in Period Open/Close

If you have a large number of companies and use the Period Open/Close feature, using the Mark All function can take some time to process when offline companies are included. Now you may choose to view only online companies from the View drop-down list. When you choose Mark All, only those online companies are marked.

You can also see which companies are online from within the list of companies.

Period Open / Close

Open, close, or create Fiscal Periods in multiple Companies at the same time.

1. Select or enter a Fiscal Year, then mark one or more Companies.
2. Double-click a Period to open or close it, or click Open All or Close All.

Fiscal Year: 2027

Companies

Company Name	First Day	Last Day	Messag...	Next Fiscal Year	Comp Online?	DB Online?
<input checked="" type="checkbox"/> Fabrikam, Inc.	1/1/2027	12/31/2027	12	2030	Yes	Yes
<input type="checkbox"/> Test Company	1/1/2027	12/31/2027	12	2028	Yes	Yes

View: Online Companies