



Rockton Pricing Management

For Dynamics GP 2018 and GP 2018 R2

Documentation dated November 18, 2021

Rockton Pricing Management Connector for Dynamics GP

Table of Contents

Introduction	4
Installation	4
A Note About Omni Price	7
RPM Toolbar	7
RPM Security Settings	7
RPM Company Setup window	8
Enable Rockton Pricing Management for this Company	8
Pricing Database Name	8
Pricing Method	8
Date Source	9
Prompt to break link with RPM when changing a price	9
Shortcut Key Assignments	9
Sales Transaction Entry window	10
Adjustments	11
Manually changing the Unit Price	15
Recalculating a Price	15
Recalculating a single line	15
Recalculating an Entire Transaction	16
Recalculating an Entire Batch	16
Sales Distribution Entry	17
Process Rebates	18
Rebate Batch ID	18
Description	19
Batch Status	19
Batch Total	19
Batch Count	19
Debit/Credit Action	19
Account Number	19
Document to Create	20

Document Number	20
Batch ID	20
Customer Number/Vendor Number	20
Item Number	20
Filter by Adjustment Name	20
Price Adjustment Grid	21
Process Rebate Batch	21
Edit Rebate Batch	22
Delete Rebate Batch	22
Disassociate Rebate Batch	22
Rockton Pricing Management Setup window	23
Setup tab	24
Troubleshooting tab	24
Uninstall tab	24
About Rockton Pricing Management window	25

Introduction

For Rockton Pricing Management (RPM) to function in a typical customer environment, it must have two key components: a) the Pricing Engine, a stand-alone SQL and Windows application, and b) a Connector, an ERP-specific software module that maximizes the use of RPM for the given ERP (in this case, Microsoft Dynamics GP). The Connector integrates seamlessly into the ERP's Sales Document data entry process.

This document will describe how to install, configure, and use RPM within Dynamics GP. It assumes that the Pricing Engine component of RPM has already been installed and that the appropriate data from Dynamics GP (e.g. Accounts, Items, Customers, etc.) has been imported into RPM.

Installation



*Please read these instructions in their entirety before installing this software.
We recommend that you don't run any other Windows programs when installing this program.*

Workstation Installation Instructions

1. Extract **all of the files and folders** in the zip file you downloaded to a folder where you can access it from all workstations that you are going to install.
2. From each computer on which you wish to install RPM, right-click the RPM setup file (**RPMSetup.exe**) and choose *Run as administrator*.
3. Select the folder where Dynamics GP is installed.



Important! *Install the RPM Connector to the same directory where Dynamics GP is installed. If the default directory on the RPM Connector for Microsoft Dynamics GP Installation Wizard is not the same as the Dynamics GP installation directory, modify the default directory. If you enter this incorrectly, RPM will not function!*

4. Click the Install button. This will copy **RPM.cnk** and any other files as appropriate. It will also install other components that are necessary to run RPM. On some installations, you may have to reboot your system.
5. Verify that the Status shows "Installed Successfully." for each item listed. Then click the Exit button.
6. Include the new chunk file code into Dynamics GP by launching Dynamics GP. Right-click the Dynamics GP icon, choose More, then choose *Run as administrator*. The following message should appear:

New code must be included in the DYNAMICS.SET dictionary. Do you wish to include new code now?

Choose **Yes**. This process will modify your DYNAMICS.SET file to include information relating to RPM, and the **RPM.cnk** file will create an **RPM.DIC** file.

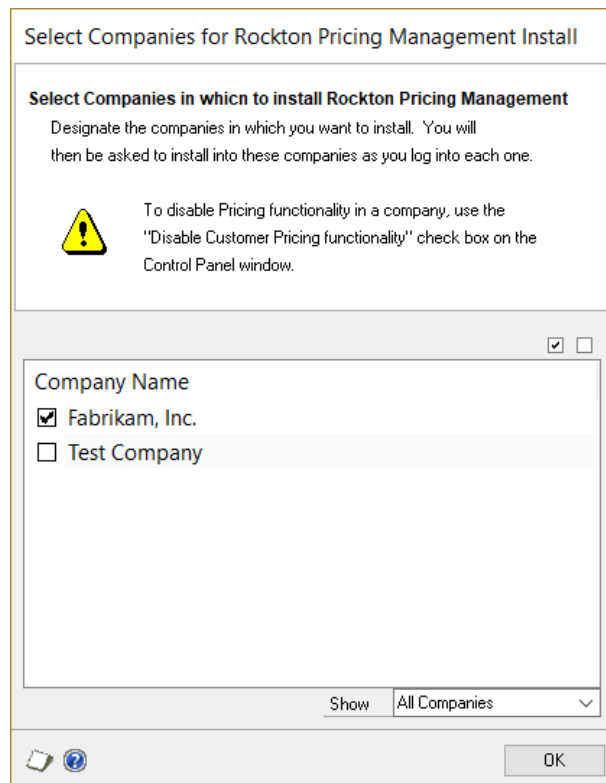
7. Log in as any User that has sufficient SQL Server rights to be able to create Tables and Triggers. This user must either be in the 'sysadmin' fixed server role or the 'db_owner' role for the DYNAMICS database. In addition, this User must be either in the RPM ADMIN or POWERUSER Security Role.



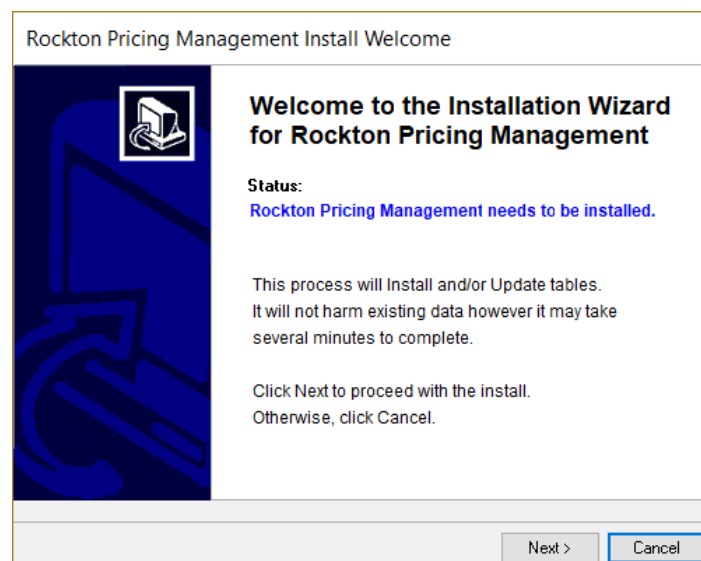
For new installations of RPM (not upgrades from a previous build), log in as a User in the POWERUSER Security Role. This is because the RPM ADMIN role has not yet been created.

8. Log into any company. RPM maintains data at the system and company levels, therefore it is necessary to install the software in each Dynamics GP company where you want to use RPM.

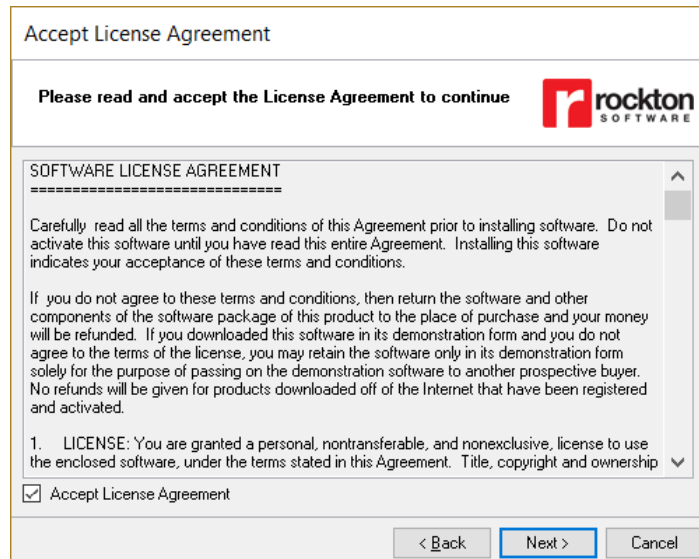
9. The Select Companies for Rockton Pricing Management Install window will open. Mark the companies in which you plan to install RPM. Then click OK.



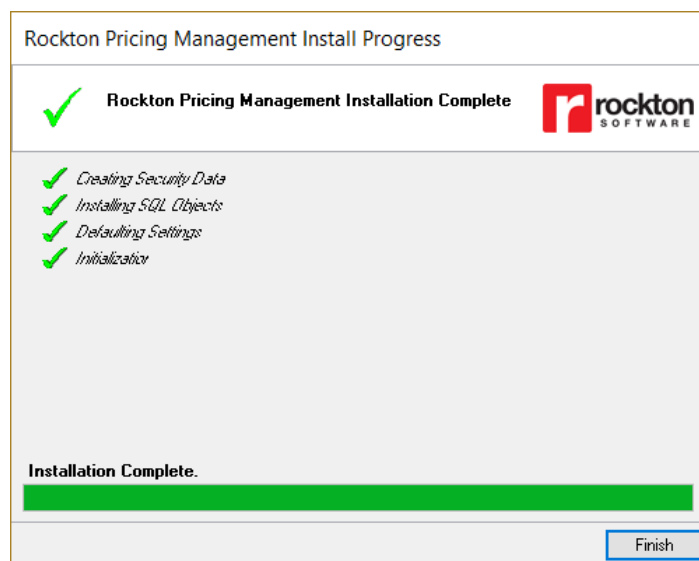
10. Next, the RPM Install Welcome window will open. Note the status message. This indicates whether you will be installing from scratch or upgrading from an earlier build.



11. Click the Next button to review the License Agreement.



12. Mark the **Accept License Agreement** check box, then click the Next button to launch the Install Progress dialog. You may see some informational messages as the installation continues. Take note of these and click OK or respond to them as necessary.



13. When the installation has completed, choose the Finish button. The Rockton Pricing Management Status window will open. Take note of any messages and click OK.

14. You will then see this dialog:

Would you like to install Rockton Pricing Management for another company, or have you finished?

Choose "Another" to open the Company Login window. Log in to the next company, then repeat steps 8 through 14 for each additional Company. After the last Company, choose "Finished".



We assume that you've installed the RPM Pricing Engine into the same SQL Server instance as Dynamics GP. If not, you must modify the upr_RPMGetPrice stored procedure, found in the system database, to point to the actual location of the PricingManagement database.

This completes the installation process for the first workstation. You now can install RPM on all others by following steps 1 through 6 above. No further workstation-specific installation is required.


A Note About Omni Price

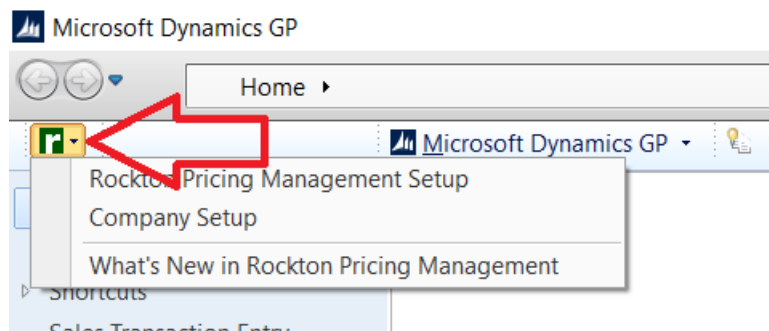
If you are migrating from Rockton's Omni Price product to Rockton Pricing Management, you will be happy to know that you can have both products installed together. However, no pricing will be derived from Omni Price's Contract setups. The benefit to having it installed is two-fold. First, you will still be able to refer to any history that may be stored in Omni Price. Second, it may be useful to refer to your Omni Price Contract and Filter setups while you are setting up Rockton Pricing Management.

With both products installed, you will receive the following message after logging into Dynamics GP:

Rockton Omni Price will have limited functionality since Rockton Pricing Management is also installed. You will still be able to review setup information, but pricing calculations and other functionality will be disabled for Omni Price.

RPM Toolbar

Most of the windows in RPM can be opened from the RPM Setup menu by navigating to Microsoft Dynamics GP > Tools > Setup > Rockton Pricing Management and then choosing the desired window from the list. However, you can also see this same list by choosing the  icon in the toolbar:



RPM Security Settings

Security in RPM can be administered via the following Security Items:

- RPM ADMIN Security Role
Used to set access to an Administrator of RPM.
- ADMIN_RPM_01 Security Task
Contains all windows necessary to setup and administer RPM. Typical Users do not need to have access to these windows.
- DEFAULTUSER Security Task
Contains all the windows that are required for the average User to be able to use RPM. No setup or administration windows are included.

RPM Company Setup window

RPM Company Setup - TWO15 (sa)

OK Cancel File Tools Help Add Note

Actions File Tools Help

☒ Enable Rockton Pricing Management for this Company

Pricing Database Name: PricingManagementGP

Pricing Method: Dynamic

Date Source: Document Date

☒ Prompt to break link with RPM when changing a price

Shortcut key assignments

Sales Line Details	Z
Recalculate Line	R
Recalculate Transaction	T
Recalculate Batch	B
Show Adjustment	A

Access this window by logging on as a User in the RPM ADMIN Security Role or the POWERUSER Security Role and go to Microsoft Dynamics GP > Tools > Setup > Rockton Pricing Management > Company Setup.

Description

This window is used to activate RPM for this company and make some company-wide settings. After marking Enable Rockton Pricing Management for this Company, you can set these options:

Enable Rockton Pricing Management for this Company

Checking this box will turn on all features of Rockton Pricing Management for the current Company.

Pricing Database Name

Enter the name of the Pricing Database you have installed for this company. The default is PricingManagementGP, but you may have changed this name when you installed the RPM engine components. If you have several companies installed, you then you will have separate RPM pricing databases for each Dynamics GP company. You must log in to each company where RPM is installed and enter the correct Pricing Database Name for each company.

Pricing Method

Select the method to use when RPM calculates a price:

- Dynamic – always let RPM determine the best Price Schedule to use
- Static – always use the Price Schedule that is specified on the Sales Transaction
- Hybrid – allow the user to decide which of the above pricing methods to use for each sales line item

Date Source

Select which Sales Order Processing date to use for RPM filters that are date-specific. You may choose between Document Date, Requested Ship Date, or Quote Expiration Date.

Prompt to break link with RPM when changing a price

If a user changes the unit price or extended price on a sales transaction, this will “break the link” to RPM’s calculated price. Marking this option will prompt the user to confirm that they want to do this.

Shortcut Key Assignments

You can change the shortcut keys that are assigned to any of these actions by default. All shortcuts are initiated by pressing Ctrl + the key assigned. Note that you may also perform any these actions from the Additional menu on their respective windows.

- *Sales Line Details* – Open the Sales Line Details window from the following windows:
 - Sales Transaction Entry
 - Sales Item Detail Entry
 - Sales Transaction Inquiry Zoom
- *Recalculate Line* – Call RPM to determine the current price for the current line from the following windows:
 - Sales Transaction Entry
 - Sales Item Detail Entry
- *Recalculate Transaction* – Call RPM to determine the current price for all lines of the current transaction from the following window:
 - Sales Transaction Entry
- *Recalculate Batch* – Call RPM to determine the current price for each transaction in the current batch from the following window:
 - Sales Batch Entry
- *Show Adjustment* – Open the Rockton Pricing Management - Adjustment Details window from the following window:
 - Sales Distribution Entry

Sales Transaction Entry window

This is the main window in Dynamics GP where you will enter all Sales documents.

Item Number	U of M	Invoice Quantity	Unit Price	Extended Price
128 SDRAM	Each	1	\$2.77	\$2.77
		0	\$0.00	\$0.00

Summary	
Subtotal	\$2.77
Trade Discount	\$0.00
Freight	\$0.00
Miscellaneous	\$0.00
Tax	\$0.00
Total	\$2.77

This window is accessible by navigating to Transactions > Sales > Sales Transaction Entry.

Description

Rockton Pricing Management is seamlessly integrated into Dynamics GP's Sales Transaction Entry window. Enter a transaction as you normally would and, if pricing has been defined for the combination of Item Number, Customer Number, etc. that you have entered, then RPM will return the defined price to the Unit Price field. If no price is found, RPM will use the Unit Price and Price Level (see the next paragraph) that would normally be calculated by Dynamics GP. This warning dialog will also open:

Document Number: STDINV2318
Document Type: Fulfillment Order
Item Number: 128 SDRAM

Message
Rockton Pricing Management failed to return a price for this Item. Default Pricing was used.

In addition to the Unit Price, the Price Schedule ID that RPM used in determining this price will be returned to the Price Level field in the sales line on the transaction. To see this field, click the Show Details button, indicated by the red arrow in the screen shot above. This will result in the transaction window appearing as follows (note that the Price Level field is indicated by the red box):

The screenshot shows the 'Sales Transaction Entry - TWO15 (sa)' window. The 'Line Items by Order Entered' section is expanded, showing a table with columns: Item Number, D, U of M, Invoice Quantity, Unit Price, and Extended Price. The first row shows '128 SDRAM' with a unit price of \$2.77. Below the table, there are fields for Description, Markdown, Unit Cost, Req Ship Date, Date Shipped, Billed Quantity, Qty Fulfilled, Qty Canceled, and Qty to Back Order. To the right of the table, there are fields for Site ID (WAREHOUSE), Price Level (RETAIL), Ship To Address ID (WAREHOUSE), Shipping Method (LOCAL DELIVERY), and Quantity Available (7). A red arrow points to the 'Show Details' button (a magnifying glass icon) in the 'Line Items by Order Entered' section. A red box highlights the 'Price Level' field, which is set to 'RETAIL'.

If you are using the Static Pricing Method (see the section on the [RPM Company Setup window](#) for more information on Pricing Methods), then the Price Level will default per Dynamics GP's setup.



Rockton Pricing Management expects all setups relating to Sales and Inventory be complete in Dynamics GP. For instance, since the Price Schedule ID in RPM corresponds to the Price Level in Dynamics GP, you must be sure that any Price Schedule IDs being used in RPM have also been set up in Dynamics GP and are assigned to any Item / U of M combinations that may be used.

Adjustments

You can set up RPM to return additional Adjustments along with the Unit Price for certain Items. These adjustments may or may not affect the Unit Price or the Margin. Depending on your RPM setups, you may or may not be able to change the Amount of each adjustment. Each adjustment may also have a specific GL Account associated with it.

You can see the adjustments for a give line item by first positioning your cursor anywhere in the desired line and then choosing *RPM – Sales Line Details* from the Additional button in the ribbon. You can also use the shortcut key, which by default is Ctrl+Z, to open the following window:

Rockton Pricing Management - Sales Line Details - TWO15 (sa)

OK
 Redisplay
 Revert
 Additional
 File
 Tools
 Help
 Add Note

Document Type: Invoice
 Document Number: STDINV2267
 Price Level: SPECIAL

Item Number: 128 SDRAM
 Item Description: 128 meg SDRAM

Adjustment Type	Debit Account Number	Credit Account Number	Affects Margin?	Affects Unit Price?	Is Editable?	Adjustment Amount
Reseller Margin	000-4510-01	000-4110-01	Yes	Yes	No	(\$0.30)
Vendor Rebate	000-2110-00	000-2111-00	No	No	No	-\$7.50
Customer Incentive	000-1205-00	000-4110-01	Yes	Yes	Yes	(\$0.05)
Sales Commission	300-5130-00	000-2120-00	No	No	No	\$0.14

Unit Price: \$2.72
 Cost: \$152.10

Unit Price for Margin Calculation: \$2.72
 Margin: (54.83)%

☒ Price Was Found [View Diagnostics](#)

The **Rockton Pricing Management – Sales Line Details** window lists each Adjustment that has been returned from RPM for the selected line item. The fields at the top of the window come from the Sales line item that you initially selected. The columns in the list are as follows:

Adjustment Type

This is defined in the RPM Pricing Engine and is not editable on this window.

Debit and Credit Account Numbers

Each Adjustment will create two Distributions for the sales document: one Debit and one Credit.

If the Adjustment Amount field is positive, then the following distributions will be created:

Account Number	Debit Amount	Credit Amount
Debit Account Number	If Adjustment Amount is positive ➔ Adjustment Amount If Adjustment Amount is negative ➔ 0.00	If Adjustment Amount is positive ➔ 0.00 If Adjustment Amount is negative ➔ -1 * Adjustment Amount
Credit Account Number	If Adjustment Amount is positive ➔ 0.00 If Adjustment Amount is negative ➔ -1 * Adjustment Amount	If Adjustment Amount is positive ➔ Adjustment Amount If Adjustment Amount is negative ➔ 0.00

See the [Sales Distribution Entry window](#) section for more information about viewing the Distributions for a sales document.

Affects Margin?

If Yes, then the Adjustment Amount will be applied to the Unit Price value used when calculating the Margin. This value is represented by the Unit Price for Margin Calculation field at the bottom of this window.

Affects Unit Price?

If Yes, then the Adjustment Amount will be applied to the Unit Price returned to the sales transaction.

Is Editable?

If Yes, then the Adjustment Amount can be changed by the user. If No and the user attempts to change the Adjustment Amount, their change will be backed out and they will see the following message:

You are not allowed to make changes to this adjustment.

Adjustment Amount

This is the amount of the adjustment that was applied to the Unit Price. When a price is returned from RPM, these amounts have already been considered in that returned price. However, if the user makes a change to an Adjustment Amount later, the Unit Price will be adjusted by the difference between the amount originally calculated by RPM and whatever value the user has just entered for that adjustment.

Example 1

Let's say that RPM calculated a Unit Price of \$100.00 with an adjustment that has an amount of \$5.50. Is Editable? is set to Yes and Affects Unit Price? is also set to Yes.

If the user then changes the Adjustment Amount from \$5.50 to \$10, the Unit Price will be adjusted by the difference, or \$4.50. The new Unit Price will now be \$104.50. If the user later changes it from \$10 to \$12, then the Unit Price will be adjusted by two additional dollars, to \$106.50. This is because \$12 is \$6.50 more than the original amount calculated for this adjustment (\$5.50).

Example 2

We will use the same initially calculated Unit Price of \$100.00 and adjustment as in the previous example. However, in this example, Affects Unit Price? is set to No.

In this case it doesn't matter how much or how many times the user changes the Adjustment Amount; the Unit Price will always remain at \$100.

An adjustment might also affect the Unit Price value that is used in the calculation of Margin. As you may have guessed, instead of looking at the Affects Unit Price? field, as we did in the previous two examples, we would look at the Affects Margin? field instead. See the description of the [Margin](#) field, below, for more information on how Margin is calculated.



You can always revert any changes to Adjustments back to how they were when RPM first calculated them by clicking the Revert button in the ribbon.

Unit Price

This is the Unit Price that will be returned to the Unit Price field on the sales transaction.

Cost

This is the Cost amount as taken directly from the sales transaction. This is not calculated by RPM, however it is used to calculate Margin. See the description of the [Margin](#) field, below, for more information on how Margin is calculated.

Unit Price for Margin Calculation

This is the Unit Price that is used in calculating Margin. It may be different from the Unit Price used on the sales transaction because some Adjustments may affect Margin, but not Unit Price. See the description of the [Margin](#) field, below, for more information on how Margin is calculated.

Margin

The Margin is calculated as follows:

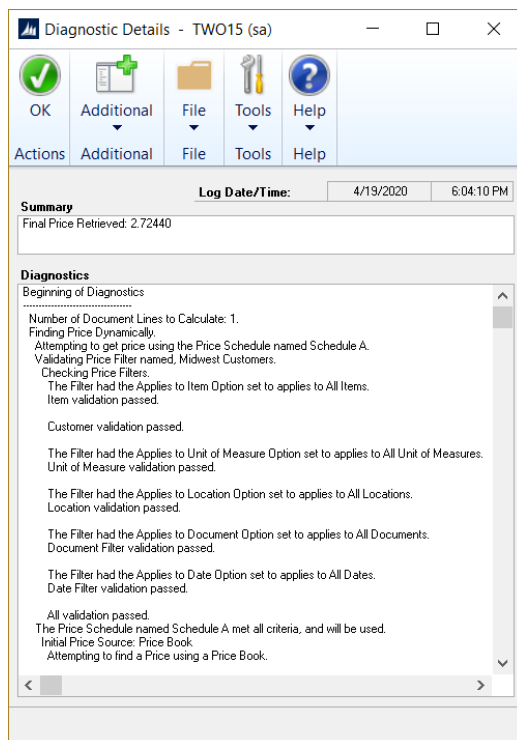
$$(Unit\ Price\ for\ Margin\ Calculation - Cost) / Unit\ Price\ for\ Margin\ Calculation$$

Price Was Found

If marked, this field indicates that RPM was able to calculate a price for this Item. If no price was calculated by RPM, this check box will be unmarked.

Diagnostic Details

Clicking this hyperlink will open the Diagnostic Details window. This window shows all the decisions made by the RPM Pricing Engine when calculating this price. This window is typically used to help understand how a given price was derived, or when trying to troubleshoot suspected pricing problems.



Adjustment Details

The list area on the Sales Line Details window shows each adjustment that was calculated by RPM. To see complete details of an adjustment, position your cursor on an adjustment line and do one of the following to opening the Rockton Pricing Management - Adjustment Details window:

- Click the Adjustment Amount hyperlink
- Choose RPM - Show Adjustment from the Additional button in the ribbon (or choose the shortcut key, which is CTRL+A by default)

Adjustment Type	Customer Incentive		
Sequence	3		
Debit Account	000-1205-00	Sales Discounts Available	
Credit Account	000-4110-01	US Sales - Retail/Parts	
Calculated Amount		(\$0.05)	
Actual Amount		(\$0.05)	
Affects Margin?	Yes		
Affects Unit Price?	Yes		
Is Editable?	Yes		

Manually changing the Unit Price

You may override the price calculated by RPM by simply typing a new Unit Price or Extended Price. However, doing that will also remove any Adjustments created by RPM, along with their associated distributions. Once you have “broken the link” to RPM for a sales transaction line, you will no longer be able to enter the Rockton Pricing Management – Sales Line Details window for that line.

The only way to restore the link to RPM is to take an action that would result in the recalculation of the Unit Price by RPM. See the following section on [Recalculating a Price](#) for more information.

Recalculating a Price

You may sometimes want to recalculate the price for a line on a Sales transaction. Some examples are:

1. If you have changed the price manually, as described in the previous section
2. If your Price Schedule setups have changed and you want to use the current price
3. If the line was entered in the past and you want to ensure its price is still valid for today.

RPM can recalculate a line on a sales transaction, all lines in a transaction, or all transactions in a batch.

Recalculating a single line

From either the Sales Transaction Entry window or the Sales Item Detail Entry window, there are two ways you can do this:

- Choose *RPM – Recalculate Line* from the Additional button in the ribbon (or choose the shortcut key, which is CTRL+R by default). Your cursor must be positioned on the line you want to recalculate to do this. You will then be prompted to confirm the request:

RPM: About to recalculate the pricing for this line. Continue?

Choose either Yes to proceed with the recalculation, or No to cancel.

- Change a field on the line or on the transaction header that may be used by RPM to determine the price for this line. Doing so causes the price to be recalculated using the current RPM pricing setup, regardless of if the link to a previous Price Schedule had been broken for this line item. Note that you will not be prompted first; the price will simply be recalculated.

Recalculating an Entire Transaction

From either the Sales Transaction Entry window or the Sales Item Detail Entry window, choose *RPM – Recalculate Trx* from the Additional button in the ribbon (or choose the shortcut key, which is CTRL+T by default). You will then be prompted to confirm:

RPM: About to recalculate the pricing for this document. Continue?

Choose either Yes to proceed with the recalculation, or No to cancel.

Recalculating an Entire Batch

From the Sales Batch Entry window, choose *RPM – Recalculate Batch* from the Additional button in the ribbon (or choose the shortcut key, which is CTRL+B by default). You will then be prompted to confirm:

RPM: About to recalculate the pricing for this batch. Continue?

Choose either Yes to proceed with the recalculation, or No to cancel.

Sales Distribution Entry

This is where you can see the distributions for the current Sales Document.

The screenshot shows the 'Sales Distribution Entry - TWO15 (sa)' window. It features a ribbon with icons for OK, Delete, Default, View, File, Tools, Help, and Add Note. Below the ribbon, there are fields for Customer ID (AARONFIT0001), Name (Aaron Fitz Electrical), Document No. (STDINV2304), Document Type (Invoice), Functional Amount (\$2.77), and Originating Amount (\$0.00). The main section is titled 'Account Distributions' and contains a table with columns for Account, Description, Type, Debit, and Credit. The table lists several distributions, including RECV, SALES, COMMEXP, COMMPAY, and MISC, with their respective debit and credit amounts. At the bottom, there are 'Functional Totals' and 'Originating Totals' rows.

Account	Description	Type	Debit	Credit
000 -1200 -00	RECV	✓	\$2.77	\$0.00
000 -4100 -00	SALES	✓	\$0.00	\$2.77
300 -5130 -00	COMMEXP	✓	\$0.08	\$0.00
000 -2120 -00	COMMPAY	✓	\$0.00	\$0.08
000 -4510 -01	MISC	✓	\$0.00	\$0.31
000 -4110 -01	MISC	✓	\$0.31	\$0.00
300 -5130 -00	MISC	✓	\$0.14	\$0.00
000 -2120 -00	MISC	✓	\$0.00	\$0.14
-	-	✓	\$0.00	\$0.00
Functional Totals			\$3.30	\$3.30
Originating Totals			\$0.00	\$0.00

This window is accessible by navigating to Transactions > Sales > Sales Transaction Entry and then choosing Distributions from the Go To button in the ribbon.

Description

This window shows you each of the distributions for the Sales document that you are displaying on the Sales Transaction Entry window. These include any distributions that were created by RPM.

RPM will create two distributions (one debit and one credit) for each Adjustment record that is associated with a sales line item price that was calculated by RPM. These distributions will have a Type of **MISC**. You are not allowed to make changes to or delete these RPM-controlled distributions from this window.

However, you can change their values by making changes to the Adjustments (see the section on [Adjustments](#) for more information). You may also see Adjustment details for any distribution that was created by RPM. Simply position your cursor to the desired distribution and choose RPM - Show Adjustment from the Additional button in the ribbon (or choose the shortcut key, which is CTRL+A by default). This will open the [Rockton Pricing Management – Adjustment Details window](#).

Process Rebates

Process Rebates - TWO (sa)

Save Clear Delete Process Disassociate Redisplay File Tools Help Add Note

Actions File Tools Help

Batch Details

Rebate Batch ID	REBATE0002	Batch Status	Pending
Description	Rebate Batch 2	Batch Total / Count	\$0.00 5
Debit / Credit Action	Add Debits / Subtract Credits	Account Number	000 -2111 -00
Document to Create	Sales Order	Customer Number	AARONFIT0001
Document Number	RBT0002	Item Number	128 SDRAM
Batch ID	TEST		

Adjustment Lines

Filter by Adjustment Name Document Date

SOP Type	SOP Number	Adjustment Name	Debit Account	Credit Account	Amount	Document Date
<input checked="" type="checkbox"/> Invoice	STDINV2286	Vendor Rebate	000-6780-00	000-2111-00	-136.9707	4/12/2027
<input checked="" type="checkbox"/> Invoice	STDINV2288	Vendor Rebate	000-6780-00	000-2111-00	3.38	4/12/2027
<input checked="" type="checkbox"/> Invoice	STDINV2289	Vendor Rebate	000-6780-00	000-2111-00	5.5	4/2/2021
<input checked="" type="checkbox"/> Invoice	STDINV2289	Vendor Rebate	000-6780-00	000-2111-00	0	4/2/2021
<input checked="" type="checkbox"/> Invoice	STDINV2289	Vendor Rebate	000-6780-00	000-2111-00	0.9	4/2/2021

Show Show All

To access this window go to Transactions | Rockton Pricing Management | Process Rebates.

Description

This window is used to create a batch to process rebates. RPM offers a great way to track rebates, royalties, commissions, and other calculations. Using the Process Rebates window, you can create a batch from the Price Adjustments based on the GL Account and then create a document in Receivables Management, Sales Order Processing, or Payables Management for the rebate so you can send a payment to the Customer or Vendor. While this is often necessary for Rebates, this window may be used for other types of Price Adjustments as well, such as royalties, commissions, and fees.

Rebate Batch ID

Enter a Batch ID for the rebate batch you are creating.

Description

Enter a description of the rebate batch being created.

Batch Status

Displays the status of the rebate batch. The following options are available:

Status	Definition
New	Status before the Rebate Batch has been saved.
Pending	Batch has been saved but a document has not been created in the corresponding module.
Processed	Batch has been created and processed. The selected document has been created in the corresponding module.
Disassociated	Batch was created and Price Adjustments assigned. The document was created in the corresponding module but then the Price Adjustments were later disassociated from the batch and are no longer assigned to that batch. The Price Adjustments can be associated with a different Rebate Batch and processed. The document created prior to the disassociation must be manually deleted. You may only disassociate a batch if it has been processed.
Needs Review	Process was interrupted when trying to create the rebate document in the sub-ledger. You may Process the batch again with the following options. <ul style="list-style-type: none">• Open the document and make any necessary changes needed to make the document valid or delete the document so a new one may be created.• Mark the Rebate Batch as processed if a valid document exists.• Cancel

Batch Total

Displays the total dollar amount of the Price Adjustments marked to be included in the batch.

Batch Count

Displays the number of Price Adjustments included in the rebate batch.

Debit/Credit Action

Select whether you wish to Add Debits and Subtract Credits or Add Credits and Subtract Debits of the Price Adjustments.

Account Number

Select the Account Number used on the Price Adjustments for which you wish to build the rebate batch. You may use one Account Number per rebate batch.

Document to Create

Select the type of document you wish to create from the batch. The following options are available:

Document Type	Definition
Receivables Invoice	Creates a Sales/Invoice in Receivables Management. When selected, the Customer Number field is made available.
Sales Quote	Creates a quote in Sales Order Processing. When selected, the Customer Number and Item Number field is made available.
Sales Order	Creates an order in Sales Order Processing. When selected, the Customer Number and Item Number field is made available.
Sales Invoice	Creates an Invoice in Sales Order Processing. When selected, the Customer Number and Item Number field is made available.
Payables Invoice	Creates an Invoice in Payables Management. When selected, the Vendor Number field is made available.

Document Number

Manually enter the Document Number you wish to use for the rebate batch transaction. This document is created in the corresponding module when the Process button is clicked and Price Adjustments have been selected. The transaction is then posted in the sub-module where it was created. If a Document has been created, a green check mark appears next to the Document Number field.

Batch ID

Select the batch from the sub-module where you wish to save the newly created document for the rebate.

Customer Number/Vendor Number

Select the Customer or Vendor to whom you wish to issue a rebate transaction. The field changes based on what is selected in the Document to Create field.

Document to Create Option	Fields displayed
Receivables Invoice	Customer Number
Sales Quote, Sales Order, Sales Invoice	Customer Number, Item Number
Payables Invoice	Vendor Number

Item Number

Select the Item Number to be used on the Sales Document created from the Rebate Batch. This field is available when Sales Quote, Sales Order, or Sales Invoice is selected in the Document to Create field. The Item Number is an Item that has been determined to be used for these Price Adjustments.

Filter by Adjustment Name

Filter the Price Adjustments listed based on Adjustment Name to narrow down results.

Price Adjustment Grid

This grid displays the Price Adjustments associated with the Account Number selected for this Rebate Batch. In order to select the price adjustments, you must first save the batch. After it is saved the Mark/Unmark options are available.



You may also drill-back on a record by selecting it and using the drill-back icon.



When viewing the grid, you may change the Show field to one of the following options:

Show	Display
Show All	Show all Price Adjustments tied to the Account Number selected.
Show Selected	Show those Price Adjustments tied to the Account Number selected.
Show Available	Show those Price Adjustments that have not been marked for the batch.

Process Rebate Batch

A Rebate Batch may be created for each Account Number associated with a rebate. Only one Account Number can be used per batch.

1. Open the Process Batch window under **Transactions | Rockton Pricing Management | Process Rebates**.
2. Enter a **Rebate Batch ID** and **Description** to define the batch being created.
3. Select the **Debit/Credit Action** based on how you want to treat the debits and credits.
4. Select the **Account Number** for the Price Adjustments you wish to create a rebatetransaction.
5. Select the **Document to Create**.
6. Enter a **Document Number** to define the transaction being created.
7. Select the **Batch ID** where you wish the document to be saved within the sub-module.
8. Enter **Customer/Vendor** for the transaction and **Item Number** if required.
9. Click **Save** to save the batch.
10. In the Price Adjustments grid, mark those adjustments to include in the rebate.
11. If you are ready to create the document, click **Process**, otherwise click **Save**.

The document is created in the module based on the Document to Create selected. The transaction must be posted within that module. The Status of the Rebate Batch ID changes to Processed.

Edit Rebate Batch

You may edit a Rebate Batch that has been created and is in a Pending status. If the batch has been processed, you must first disassociate the batch from the document that was created, then create a new batch for those Price Adjustments.

1. Open the Batch Processing window under **Transactions | Rockton Pricing Management | Process Rebates**.
2. Select the **Rebate Batch ID** you wish to edit.
3. Make the necessary changes.
4. Click **Save**.

Delete Rebate Batch

You may delete a batch that has not yet been processed.

1. Open the Batch Processing window under **Transactions | Rockton Pricing Management | Process Rebates**.
2. Select the **Rebate Batch ID** you wish to delete.
3. Click **Delete**.

The Price Adjustments are available to add to a new batch.

Disassociate Rebate Batch

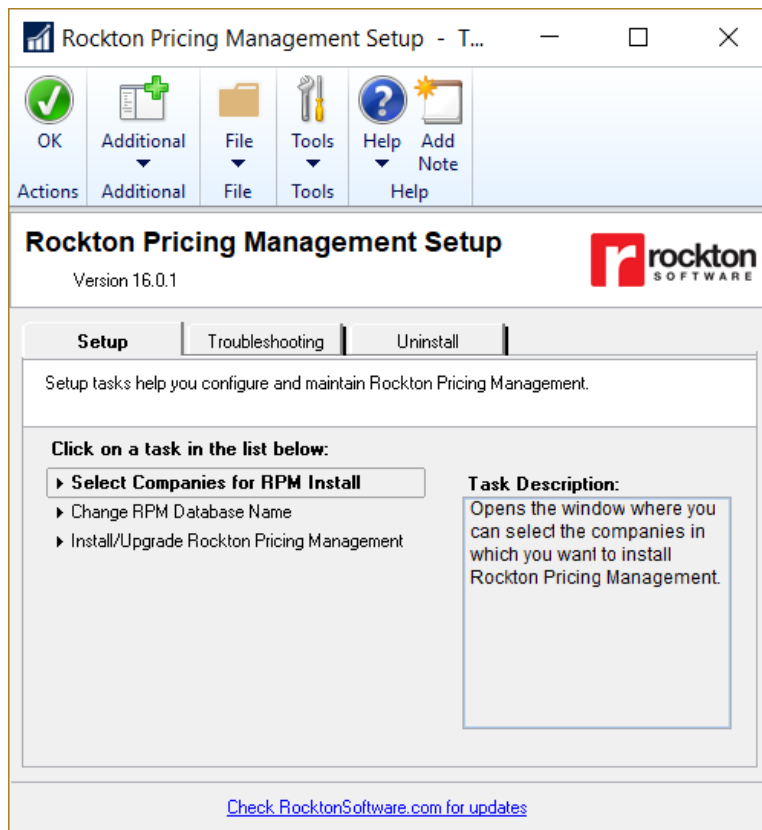
If you have processed a rebate batch but want to cancel the batch, you must disassociate the batch from the transaction that was created.

1. Open the Batch Processing window under **Transactions | Rockton Pricing Management | Process Rebates**.
2. Select the **Rebate Batch ID** you wish to Disassociate from the created transaction.
3. Click **Disassociate**.

Note: The document that was created when you originally processed the rebate batch must manually be deleted or voided if it is no longer needed. The Disassociate process does not automatically remove the record should you want to post it.

Rockton Pricing Management Setup window

The Rockton Pricing Management Setup window allows you to perform setup and maintenance tasks.



This window is accessible by logging on as a User in the RPM ADMIN Security Role or the POWERUSER Security Role and go to Microsoft Dynamics GP > Tools > Setup > Rockton Pricing Management > Rockton Pricing Management Setup.

Description

The Rockton Pricing Management Setup window gives you access to all of the tasks you will need to configure and maintain the system. It contains three tabs:

- Setup
- Troubleshooting
- Uninstall

You can see a brief description of each task by moving your cursor over any of the tasks in the list. To select a task, simply click on the task name.

Clicking the “Check RocktonSoftware.com for updates” link will take you to the Downloads web page for this product. Here you can verify that you are installing the latest build.

The tasks available for each tab are described in the following tables:

Setup tab

Setup tasks help you configure and maintain Rockton Pricing Management.

Task	Description
Select Companies for RPM Install	Opens the window where you can select the companies in which you want to install the Rockton Pricing Management.
Install/Upgrade Rockton Pricing Management	<p>Installs the software, or upgrades it from a previous version. This may take several minutes. It will also set table permissions to all users in the system database. You can perform this task multiple times without causing any problems.</p> <p>Note: you must be logged in as a User that is in the 'sysadmin' fixed server role or the 'db_owner' role for the DYNAMICS database and any database for which there are SQL Table audits defined.</p>

Troubleshooting tab

These tasks are for troubleshooting only. You may be asked to use them by Rockton Support.

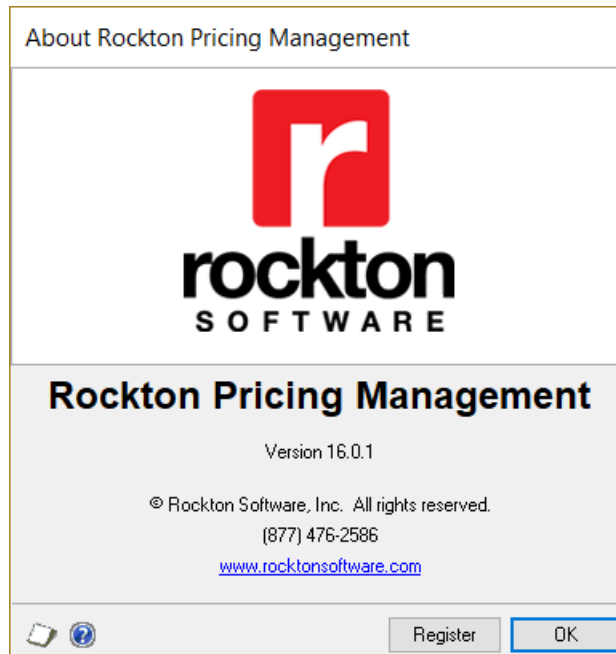
Task	Description
Re-add Security Data	<p>Adds Security Roles and Tasks for Rockton Pricing Management, if they have been deleted.</p> <p>Note: you must be logged in as a User that has access to run the Install/Upgrade option (as described above) or a User that has Security access to both the Security Role Setup and Security Task Setup windows in order to use this option.</p>
Move to First Position	Moves Rockton Pricing Management to the first position in the launch file after Dynamics GP.
Remove from Launch File	Removes Rockton Pricing Management from the launch file.
Rebuild Menus	Rebuilds menu navigation for Rockton Pricing Management by first removing all menus from the Menu Master table. To complete the process you must log in again to see the rebuilt menus.
Enable Script Logging	Enables script logging, beginning with the next time you log into Dynamics GP from this workstation.
Diagnostics Mode	This option may gather diagnostics, create log files, open the Code window, or other things that may be helpful to Rockton Support.

Uninstall tab

These tasks can be used to uninstall Rockton Pricing Management from the system or just from this workstation.

Task	Description
Workstation Uninstall	Removes Rockton Pricing Management from the launch file. Also removes settings from the Defaults file.
Complete Uninstall	Rockton Pricing Management tables will be removed from the database(s) and the product will be removed from the launch file.

About Rockton Pricing Management window



This window is accessible by going to Help > About Microsoft Dynamics GP ... From the Additional menu on this window, choose About Rockton Pricing Management.

Description

The About Rockton Pricing Management window shows the version of the Rockton Pricing Management Connector that you have loaded, along with the phone number to use to contact Rockton Software, and a link to our website.