



Project Cost WebSuite Service Pack Guide

For:
Microsoft Dynamics™ GP

Version
16.02 & 18.01



PROJECT COST BY OLYMPIC SYSTEMS, INC.

PC WebSuite Cost Service Pack Guide

© 2018 Olympic Systems, Inc.
3800 Aurora Ave North • Suite 360
Seattle, WA 98103
Phone 206.547.5777 • Fax 206.547.4933



Table of Contents

SERVICE PACK FIXES:	4
UPGRADE PROJECT COST WEB SUITE FROM PRIOR VERSION	5
COPY PROJECT COST WEB COMPONENTS TO THE INETPUB DIRECTORY.....	5
STEP 1. EXTRACT THIS FILE	5
STEP 2. LOCATE THE PCWEBSUITE SUB-DIRECTORY.	5
STEP 3. RUN THE PCWEBSUITE SETUP APPLICATION (AS ADMINISTRATOR)	6
STEP 4. CONFIGURE THE SQL CONNECTION IN THE PCWEBSUITE SETUP WINDOW	7
<i>Step 4a. Authentication Settings:</i>	7
<i>Step 4b. Binding Settings:</i>	7
Disable Expense Setting:.....	8
Disable Time Setting:.....	8
Email Alert Template (xslt file) Setting:.....	8
Email Alert Subject Setting:.....	8
Lockout Features Enabled:.....	8
Lockout Window Minutes:	8
Max Attachment Size:.....	8
Pay Period Range (Days):	8
Recent Transactions (Days):	8
Recent Transactions (Number):	8
Standard SOP Comments:.....	8
Submission Return Count:	8
Default ASPX Title Settings:.....	9
<i>Step 5. Configure the SQL Connection in the PCWebSuite Setup window</i>	9
<i>Step 6. Configure the Custom Logo for the PCWebSuite Setup window</i>	9
<i>Configure the Advanced Settings in the PCWebSuite Setup window</i>	10
Attachment Types Settings:	10
Standard Blocked Attachment Types:	11

Service Pack Fixes:

Window/Form/Process	Version	Update Notes
PC WebSuite...	V16.2.4	Updated PC WebSuite - Updated PC WebSuite to correct false Red Tab color on Submit Tab.
PC WebSuite...	V18.1.2	Updated PC WebSuite - Updated PC WebSuite to correct false Red Tab color on Submit Tab.
PC WebSuite	V16.2.4	Updated to remove dependency on Dexterity Shared Components on IIS Server.
PC WebSuite	V18.1.2	Updated to remove dependency on Dexterity Shared Components on IIS Server.

Upgrade Project Cost Web Suite from Prior Version

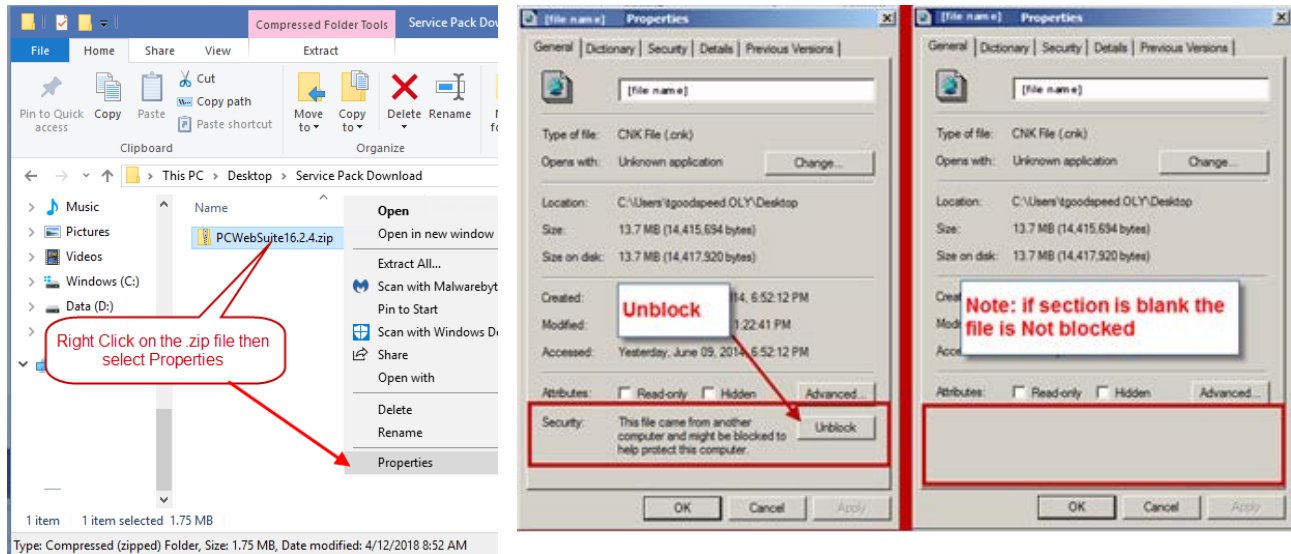
Copy Project Cost Web Components to the Inetpub Directory

These components are found in the folder **PCWebSuiteMM.#.x.zip** file that was included in the Download.

Note: (MM= major version number, #= minor version number & x = service pack release)

Step 1. Extract this file

Be that the files have not been blocked by your security settings.

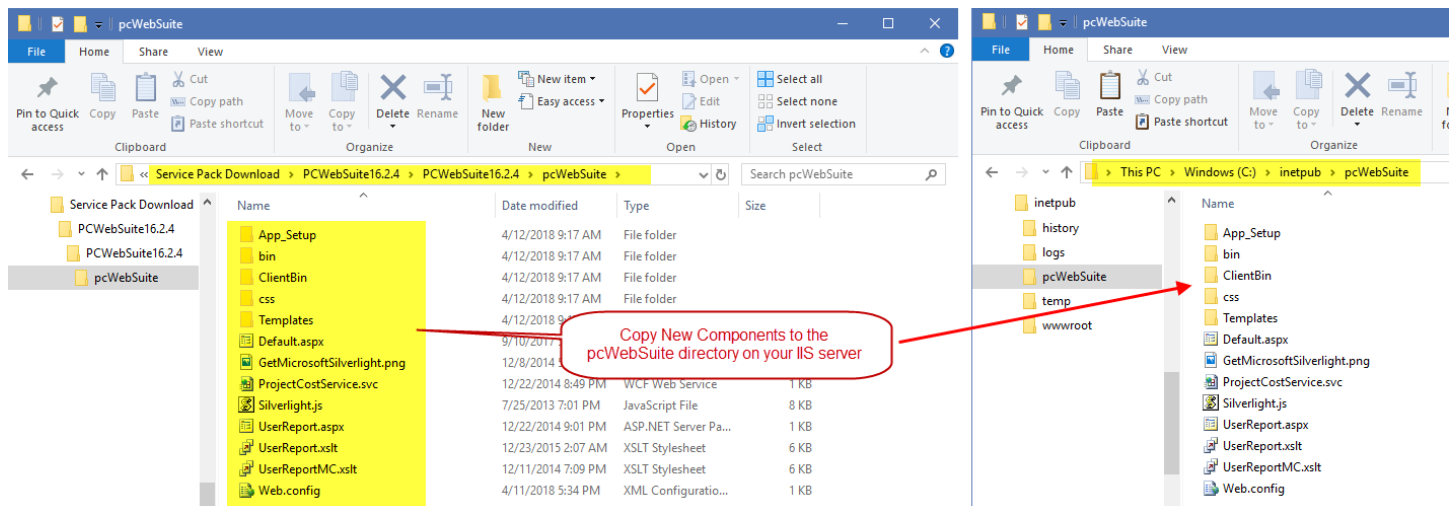


Right Click on the .zip file and Select Properties.

Click the Unblock button if needed

Step 2. Locate the pcWebSuite sub-directory.

Use Windows Explorer to copy the new components to the **pcWebSuite** directory on your **Inetpub** directory



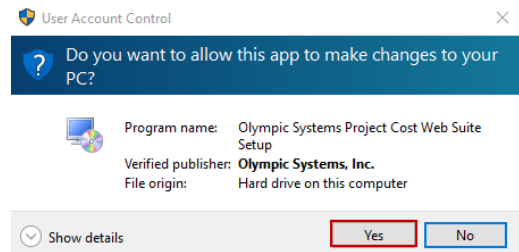
Step 3. Run the PCWebSuite Setup Application (as Administrator)

Using Windows Explore run the Setup.exe located in **C:\inetpub\pcwebsuite\App_Setup**

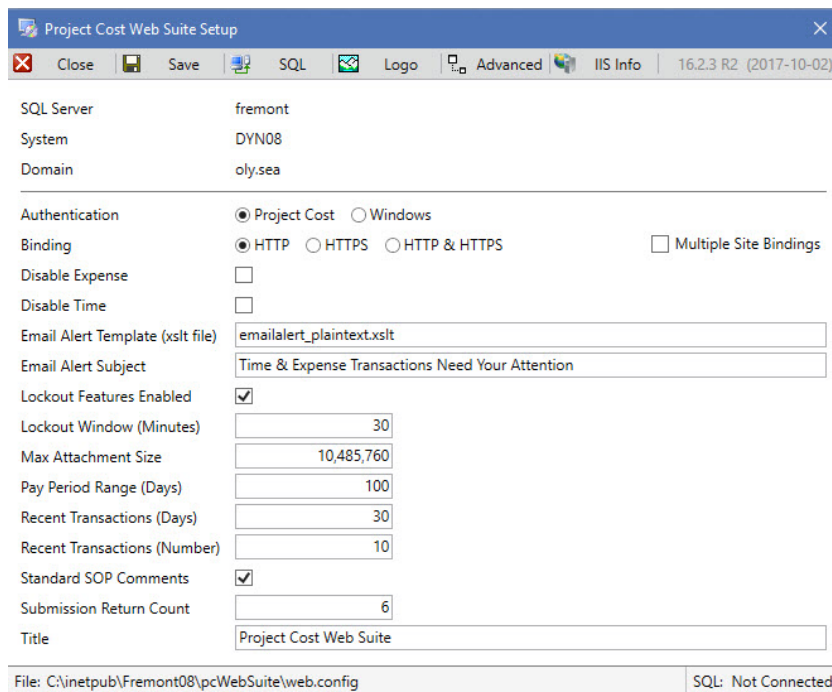
Double-Click on **Setup.exe**



Depending on security permissions you may receive the UAC warning window – Click Yes if you get this window.



The Project Cost Web Suite Setup Utility will open.



Step 4. Configure the SQL Connection in the PCWebSuite Setup window

Project Cost Web Suite Setup

Close Save SQL Logo Advanced IIS Info 16.2.3 R2 (2017-10-02)

SQL Server fremont
System DYN08
Domain oly.sea

Authentication ☐ Project Cost ☒ Windows
Binding ☒ HTTP ☐ HTTPS ☐ HTTP & HTTPS ☐ Multiple Site Bindings
Disable Expense ☐
Disable Time ☐
Email Alert Template (xslt file) emailalert_plaintext.xslt
Email Alert Subject Time & Expense Transactions Need Your Attention
Lockout Features Enabled ☒
Lockout Window (Minutes) 30
Max Attachment Size 10,485,760
Pay Period Range (Days) 100
Recent Transactions (Days) 30
Recent Transactions (Number) 10
Standard SOP Comments ☒
Submission Return Count 6
Title Project Cost Web Suite

File: C:\inetpub\Fremont08\pcWebSuite\web.config * SQL: Not Connected

Step 4a. Authentication Settings:

Authentication ☐ Project Cost ☒ Windows

Select Project Cost for “Standard” Project Cost Sign-On authentication

Select Windows for “Single-Sign-On” authentication

Note: Windows authentication will default to Project Cost Sign-On if Windows credentials are not available or fail. Windows Authentication is essentially “Both”.

Step 4b. Binding Settings:

Binding ☒ HTTP ☐ HTTPS ☐ HTTP & HTTPS ☐ Multiple Site Bindings

Select HTTP for Non-Secure Bindings Only

Select HTTPS for Secure Bindings Only (Recommended)

Select HTTP & HTTPS for Both Secure & Non-Secure Bindings (Recommended)

Check Multiple Side Bindings as directed by Olympic Support Staff

Note the remaining settings can normally be set using the default settings.

Review these settings and if not needed to change proceed to Step 5

Disable Expense Setting:

Disable Expense

☐

By Checking this check-box – Project Cost will disable the Expense Tab for **ALL users**.

If you need to disable the Expense Tab for one or a group of users this can be controlled via the **PC Employee Setup window** by de-selecting the “Enable Employee Expense Web Entry”.

Disable Time Setting:

Disable Time

☐

By Checking this check-box – Project Cost will disable the Time Tab for ALL users.

Email Alert Template (xslt file) Setting:

By default this value is set to "emailalert_plaintext.xslt"

Email Alert Subject Setting:

By default this value is set to "Time & Expense Transactions Need Your Attention"

Lockout Features Enabled:

By default this is “Checked on”

This feature will introduce a delay for the User's IP address after the user has made 4 failed logon attempts.

Delay after X number of logon attempts,

4th attempt a delay of 16 seconds is added before the user can attempt the next logon

5th attempt a delay of 32 seconds is added before user can attempt the next logon

6th attempt a delay of 64 seconds is added before user can attempt the next logon

7th attempt a delay of 128 seconds is added before user can attempt the next logon

...And continue until you reach the Lockout Window Minutes limit.

IT Managers can clear the lockout by resetting IIS.

Lockout Window Minutes:

By default this is set to 30 minutes – this is how long information is stored for a user's failed attempts from the last failed attempt.

Max Attachment Size:

By default this is set to 10,485,760.

Pay Period Range (Days):

By default this is set to 100 Days – this is the range of days that transactions can be entered.

Recent Transactions (Days):

By default this is set to 30 days. If set to 0 (zero) no recent transactions will be presented.

Recent Transactions (Number):

By default this is set to 10 transactions. The application will recall the first 10 transactions from week to week.

Standard SOP Comments:

By default this is check on. This will truncate any billing description to 200 characters.

Submission Return Count:

By default this is set to 6.

Default ASPX Title Settings:

Default ASPX Title

Users can change the Screen Title for the Logon window

By default we set this value to read "Project Cost Web Suite" however you could put your companies name in as the value.

Step 5. Configure the SQL Connection in the PCWebSuite Setup window

Click the SQL  **SQL** Button.

Enter the SQL Server Name:

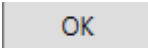
Enter the User ID:

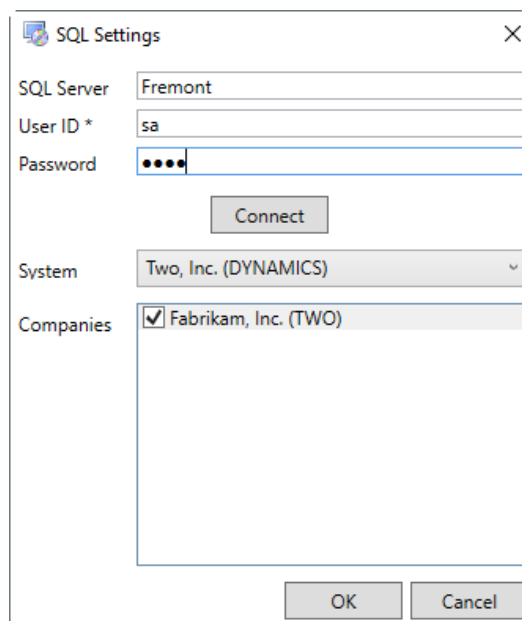
Enter the Password:

Click the Connect  button

Select the System Database:

Select Companies:

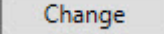
Click the OK  button

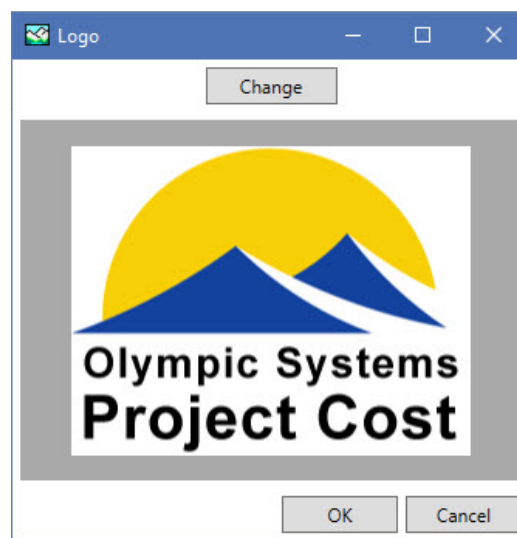


Step 6. Configure the Custom Logo for the PCWebSuite Setup window


Click the Logo  **Logo** Button.

To change the logo from the standard Olympic Systems logo:

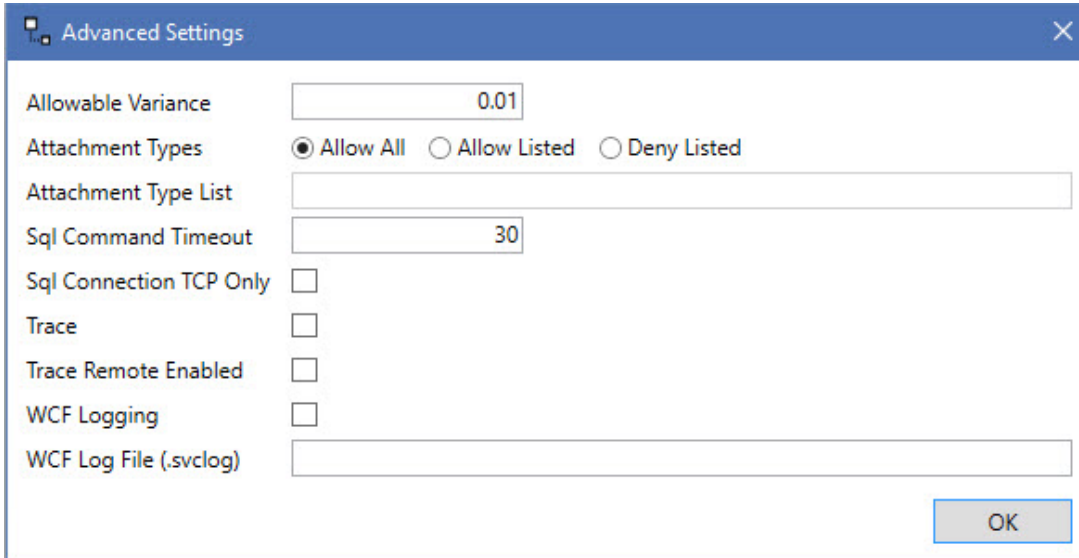
- Click the Change  button
- Path to the location of the new Logo
- **Note this must be a .jpg file format**
- Click Open
- Click OK button.



Configure the Advanced Settings in the PCWebSuite Setup window

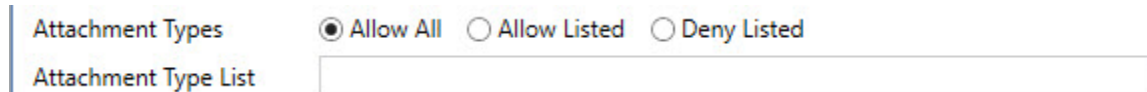
Click the Advanced  **Advanced** Button to open the Advanced Settings window.
Contact Olympic Systems Support team for detailed use of this window

A discussion of attachment types follows.



Attachment Types Settings:

This section permits the user to control what types of attachments may be uploaded to Project Cost.
The goal here is to prevent harmful file types to be loaded into the database



Allow All – will permit all types of attachments except for the standard blocked types listed below.

Allow Listed – will only permit the types listed in the **Attachment Type List** field.

Enter the type separated by a comma.

Deny Listed – will deny the types listed in the **Attachment Type List** field as well as types listed in the standard blocked types listed below.

Enter the type separated by a comma.

Standard Blocked Attachment Types:

Extension	Description	Extension	Description	Extension	Description
ade	Microsoft Access project extension	ins	Internet Naming Service	obj	Relocatable object code
adp	Microsoft Access project	isp	Internet Communication settings	ocx	Object Linking and Embedding control executable
app	Application file	its	Internet Document Set file	ops	Microsoft Office profile settings file
application	Click-Once application	jar	Java executable	pcd	Photo CD image or Microsoft Visual Test compiled script
asa	ASP declarations file	je	JScript file	pgm	CGI program
ashx	ASP.NET Web handler file.	js	Javascript script file	pif	Shortcut to MS-DOS program
asmx	ASP.NET Web Services source file	jse	JScript Encoded script file	prf	System file
asp	Active Server Pages	ksh	Korn Shell script file	prg	Program source file
aspx	ASP.NET Active Server Pages	lib	Program library common object file format	printer	Printer file
bas	Microsoft Visual Basic class module	lnk	Shortcut	ps1	Windows PowerShell scripts
bat	Batch file	mad	Shortcut	ps1xml	Windows PowerShell scripts
bin	Binary file	maf	Shortcut	ps2	Windows PowerShell scripts
cdx	Compound index	mag	Shortcut	ps2xml	Windows PowerShell scripts
cer	Certificate file	mam	Shortcut	psc1	Windows PowerShell scripts
chm	Compiled HTML Help file	maq	Shortcut	psc2	Windows PowerShell scripts
class	Java class file	mar	Shortcut	pst	Microsoft Outlook personal folder file
cmd	Microsoft Windows NT command script	mas	Microsoft Access stored procedure	reg	Registration entries
com	Microsoft MS-DOS program	mat	Shortcut	rem	ACT! database maintenance file
config	Configuration file	mau	Shortcut	scf	Windows Explorer command file
cpl	Control Panel extension	mav	Shortcut	scr	Screen saver
crt	Security certificate	maw	Shortcut	sct	Script file
csf	Script file	mda	Microsoft Access add-in program	shb	Windows shortcut
dll	Windows dynamic-link library	mdb	Microsoft Access program	shs	Shell Scrap object
drv	Driver file	mde	Microsoft Access MDE database	shtm	HTML file that contains server-side directives
exe	Program	mdt	Microsoft Access data file	shtml	HTML file that contains server-side directives
fxp	Microsoft Visual FoxPro compiled program	mdw	Microsoft Access workgroup	soap	Simple Object Access Protocol file
fon	Font file	mdz	Microsoft Access wizard program	stm	HTML file that contains server-side directives
font	Font file	msc	Microsoft Common Console document	sys	System device driver
gadget	Windows desktop gadget	msh	Microsoft Agent script helper	url	Uniform Resource Locator (Internet shortcut)
hlp	Help file	msh1	Microsoft Agent script helper	vb	Microsoft Visual Basic Scripting Edition file
hta	HTML program	msh1xml	Microsoft Agent script helper	vbe	VBScript Encoded Script file
htr	Script file	msh2	Microsoft Agent script helper	vbs	VBScript file
htw	HTML document	msh2xml	Microsoft Agent script helper	vxd	Virtual device driver
ida	Internet Information Services file	mshxml	Microsoft Agent script helper	ws	Windows Script file
idc	Internet database connector file	msi	Microsoft Windows Installer package	wsc	Windows Script Component
idq	Internet data query file	mst	Windows Installer patch package file	wsf	Windows Script file
inf	AutoRun		Visual Test source files	wsh	Windows Script Host settings file