



New Server Upgrade Guide Exchange Rate Import

For:
Microsoft DynamicsTM GP

Versions

v10, v11, v12, 14, v16 & v18.0



Olympic Systems

EXCHANGE RATE IMPORT BY OLYMPIC SYSTEMS, INC.

New Server Upgrade Guide

© 2018 Olympic Systems, Inc.
3800 Aurora Ave North • Suite 360
Seattle, WA 98103
Phone 206.547.5777 • Fax 206.547.4933



Table of Contents

Introduction	4
Microsoft .NET Framework Requirement	4
Chapter 1: Exchange Rate Import (ERI) Software Upgrade to New Server.....	5
Copy the Configuration Files from the Old Server	5
Chapter 2: Installing Olympic Exchange Rate Import (ERI) on New Server.....	6
Step 1 – Extract the Exchange Rate Import Software.....	6
Step 2 – Launch the Exchange Rate Import.msi Wizard	6
Double Click on Exchange Rate Import.msi file:.....	6
Select Installation Folder	7
Confirm Installation.....	7
Installing Complete Window	8
Check Windows Update for .NET Framework.....	8
Chapter 3: Configuration of ERI Software	9
Launch Olympic Systems Exchange Rate Import	9
Click Configuration	9
Confirm the Database Connection.....	9
Configure Registration	10
1. Import Registration Option	10
2. Get Registration Online Option	11
License Agreement Section:	12
Get Notified Section	13
Chapter 4: Scheduled Task Setup.....	14
Scheduled Tasks	14
Open the Task Scheduler	14
Create a Basic Task Window.....	14
Task Trigger window.....	15
Weekly window.....	15
Action window	16
Start a Program Window.....	16
Summary window.....	17
In the General Properties tab:	17

Introduction

The Olympic Exchange Rate Import (ERI) program uses advanced .NET technology to automatically add currency exchange rates to the Microsoft Dynamics GP database. Once setup is complete, Exchange Rate Import provides an unmanned automated process to import daily exchange rates.

The EXCHANGE RATE IMPORT program imports exchange rates published from any of several data sources:

- The European Central Bank – Daily Rates
- The Bank of Canada – Daily Rates
- Open Exchange Rate – Live Rates
- Commonwealth Foreign Exchange Bank – Live Rates
- Yahoo Finance – Live Rates

Each data source maintains their own list of available currencies: Contact our offices with questions.

Rates are imported into the exchange rate tables stored in the Microsoft Dynamics GP system database.

Daily Rates are based on the regular daily concertation procedure between central banks.

The concertation procedure normally completes at:

3:30 p.m. Central European Time or 9:15 a.m. Eastern Standard Time) for the European Central Bank

4:30 noon Eastern Standard Time for The Bank of Canada

Commonwealth Foreign Exchange and Yahoo Finance can be set for most any time

The reference rates are all published in reference to:

Euros for the European Central Bank

Canadian Dollars for the Bank of Canada

US Dollars for the Commonwealth Foreign Exchange, Open Exchange Rates and Yahoo Finance

The Exchange Rate Import program uses the ratio between rates to create exchange rate tables between currencies. .
For example: Using the European Central Bank - the USD rate for April 29, 2005 was 1.2957. This means 1.2957 dollars per Euro. The Canadian Dollar rate versus the Euro for April 29, 2005 was 1.6191. This means 1.6191 Canadian Dollars per Euro. The implied rate between the Canadian Dollar and the US Dollar was $(1.6191/1.2957)$ or 1.2495947 Canadian Dollars per US Dollar. Alternately $(1.2957/1.6191)$ or 0.8002594 US Dollars per Canadian Dollar.

The EXCHANGE RATE IMPORT supports GP Exchange Tables based on both multiply and divide calculation methods.

Microsoft .NET Framework Requirement

The Microsoft.NET Framework v4.0.30319 or greater is required for this application.

Chapter 1: Exchange Rate Import (ERI) Software Upgrade to New Server

Complete the Microsoft Dynamics GP setup before installing your Olympic Exchange Rate Import (ERI) software.

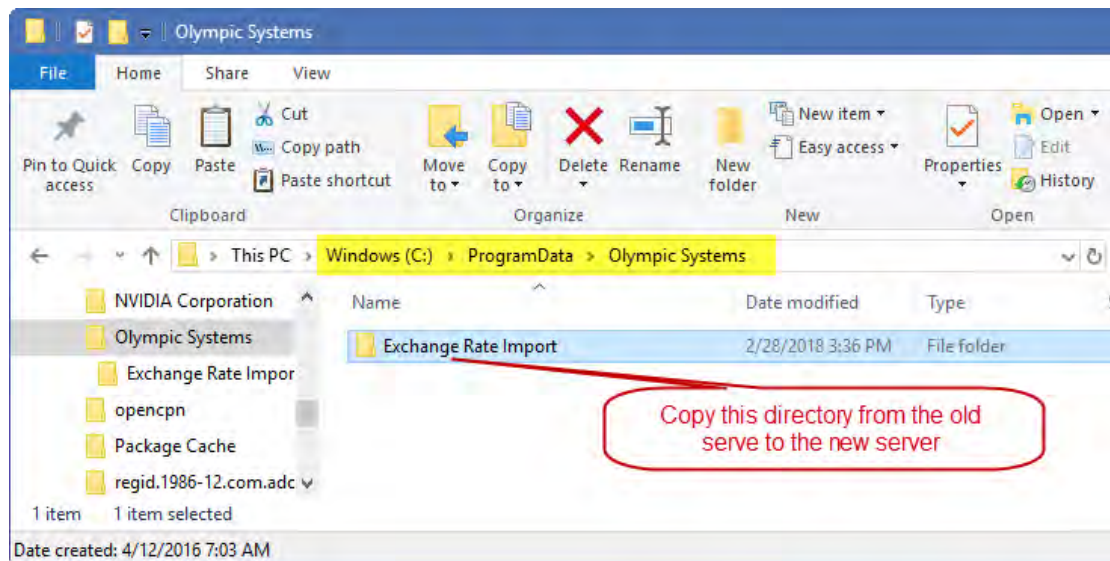
Copy the Configuration Files from the Old Server

Before starting the Exchange Rate Import Setup Wizard

Locate the Exchange Rate Import directory from the old server

This directory is found (by default) at C:\ProgramData\Olympic Systems

Note: The ProgramData directory is a hidden directory and normally is not visible.



Copy the Exchange Rate Import directory to the same location on the New Server

Chapter 2: Installing Olympic Exchange Rate Import (ERI) on New Server

Exchange Rate Import is downloaded as a compressed file.

Step 1 – Extract the Exchange Rate Import Software

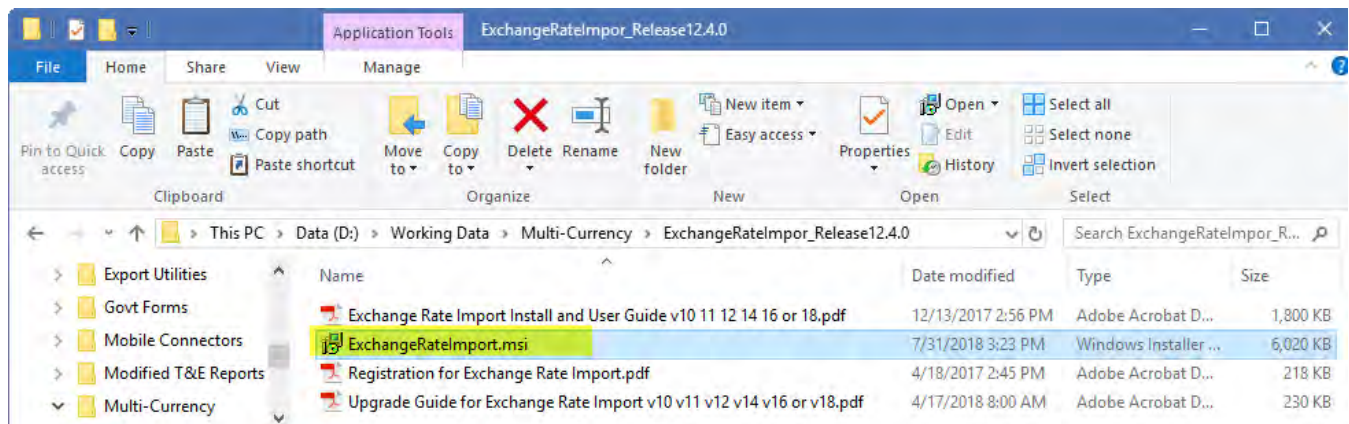
Extract the Exchange Rate Import download to your server desktop or downloads directory.

The following files will be extracted:

- ExchangeRateImport...(Directory)
 - ExchangeRateImport.msi
 - Exchange Rate Import Installation and User Guide.pdf
 - Upgrade Guide for Exchange Rate Import.pdf
 - Registration for Exchange Rate Import v...pdf

Step 2 – Launch the Exchange Rate Import.msi Wizard

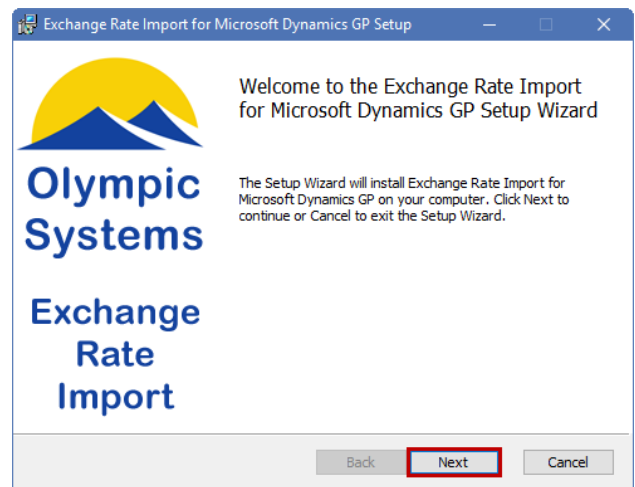
Locate the software download



Double Click on Exchange Rate Import.msi file:

The Exchange Rate Import Setup Wizard will open and assist you through the steps required to install the ERI software.

Click Next.

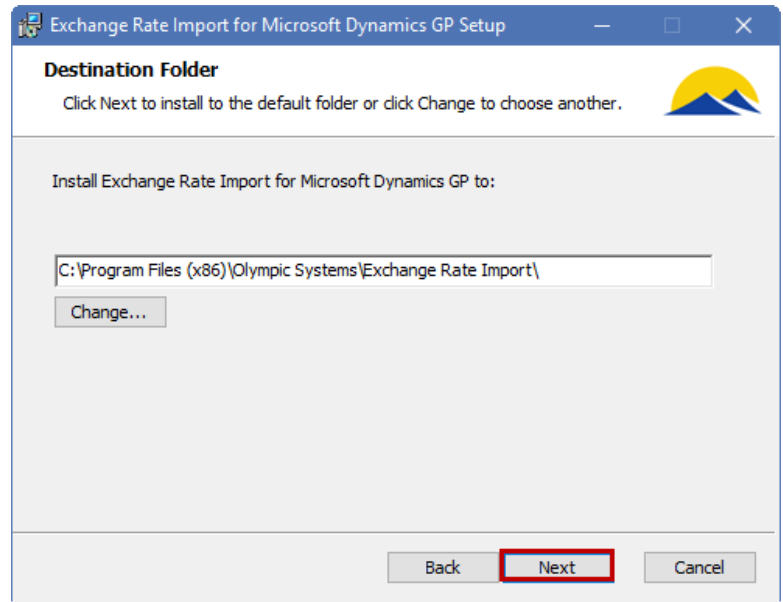


Select Installation Folder

Select a location to install ERI software.

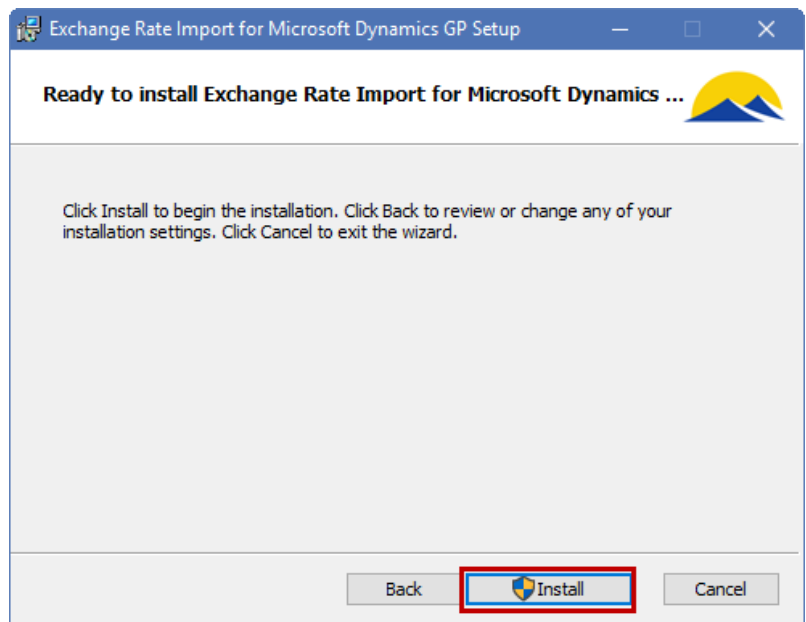
Use the **Change** button to change the location.

Click **Next** to continue.



Confirm Installation

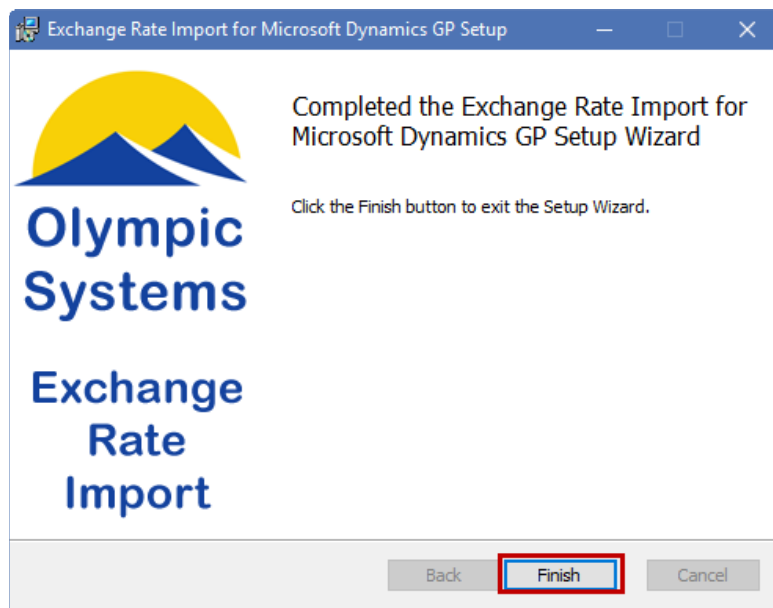
Click **Install** to start the installation



Installing Complete Window

Exchange Rate Import has been successfully installed.

Click Finish to exit the Installation Wizard.



Check Windows Update for .NET Framework

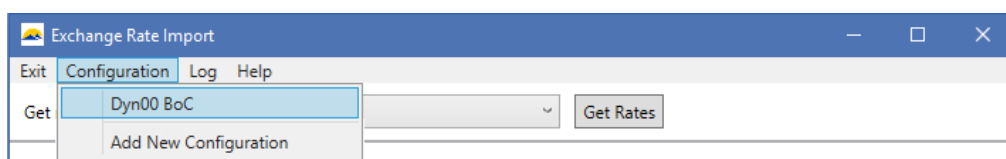
It is recommended that Windows Update be run in order to check for any critical updates to the .NET Framework.

Chapter 3: Configuration of ERI Software

Launch Olympic Systems Exchange Rate Import

Start > All Programs > Olympic Systems > Exchange Rate Import

Click Configuration



Then **Select Your Configuration**

Note: The Configuration that was used on the old Server should be available to be selected

Confirm the Database Connection

Enter the **Server Name**:

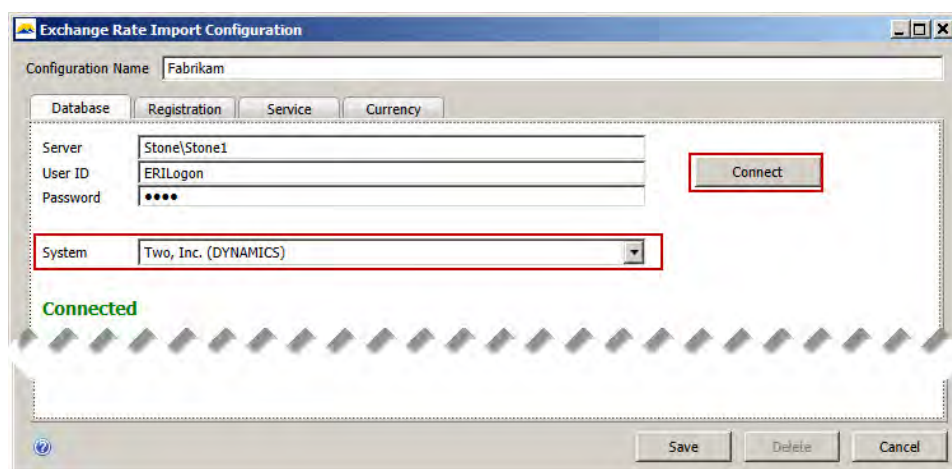
Note: this is the name of the SQL Server and Instance (if using) separated by a backslash “\”

Enter the login **User ID**:

Enter the **Password**:

Click Connect

Select the System Database

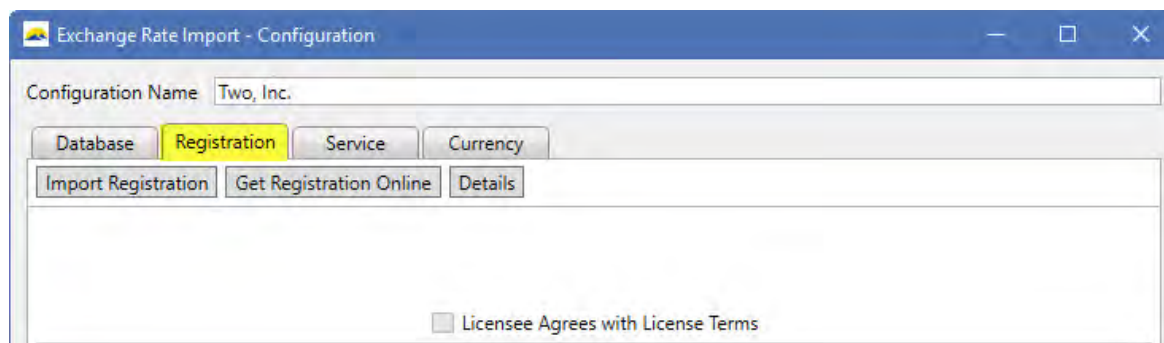


Configure Registration

Click on the **Registration** tab.

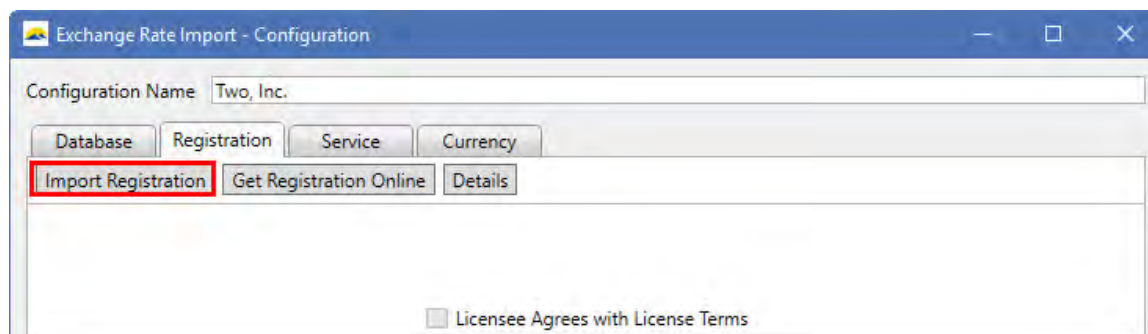
In this version the user has 2 options to configure the registration of the software

1. **Import Registration :**
2. **Get Registration Online button:**



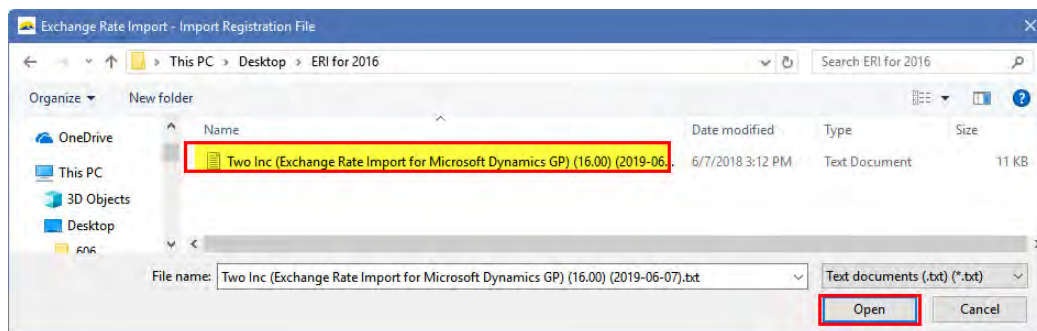
1. Import Registration Option

Click on the **Import Registration** button:



In the Open window path to the location of the Exchange Rate Import registration token that was provided when you purchased your software.

Select the token file.

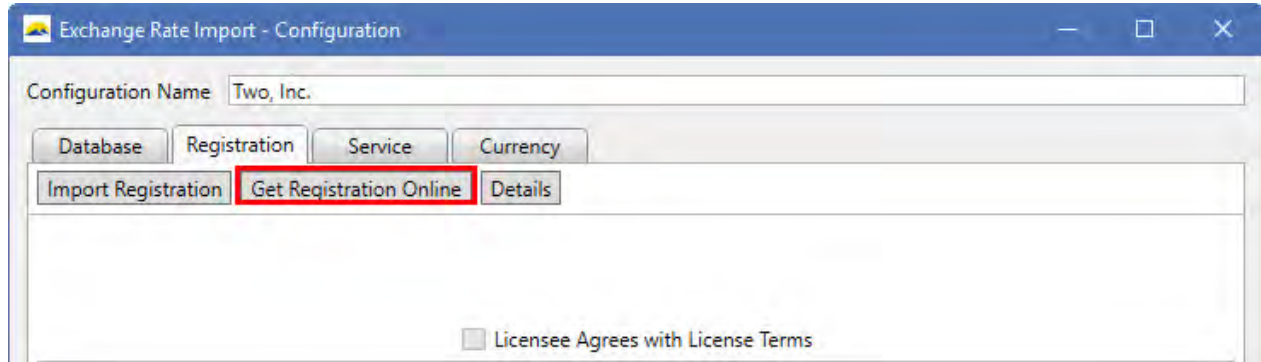


Click Open

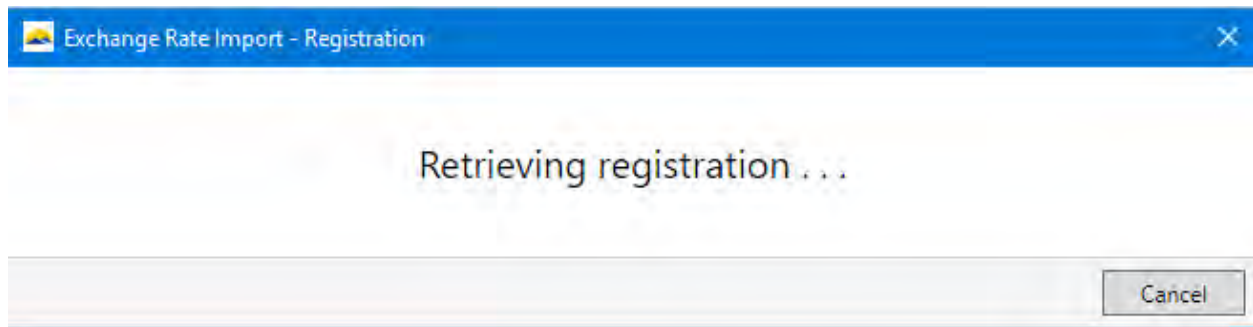
Continue to the License Agreement Section:

2. Get Registration Online Option

Click on the **Get Registration Online** button:



The software will send a request over the internet to get the registration token online.



If the existing registration is current the user will receive this message and ask if the user wants to be notified when a new key is available.

(See the Get Notified Section for more details)

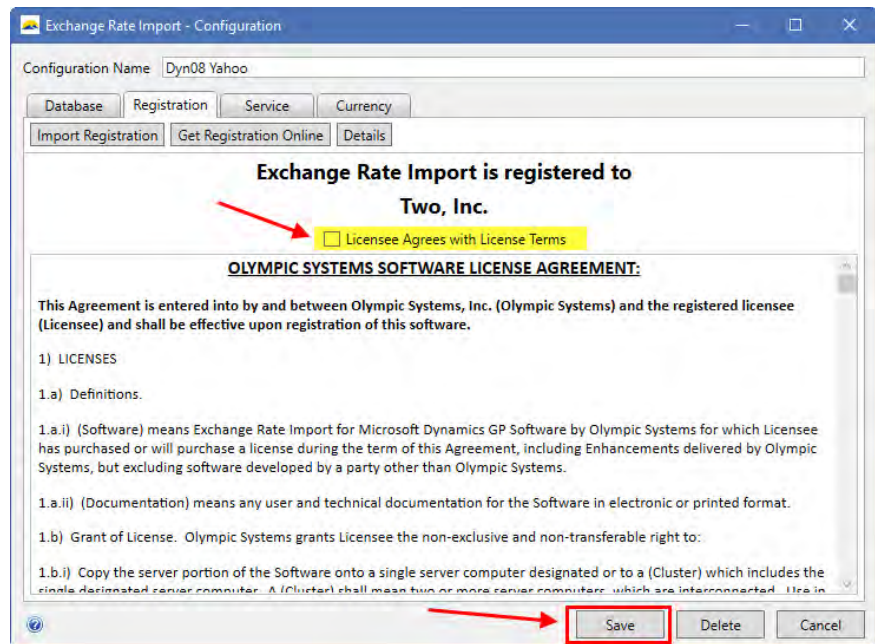
License Agreement Section:

The software will retrieve the registration. User must Review and Agree to License.

Review the License Agreement

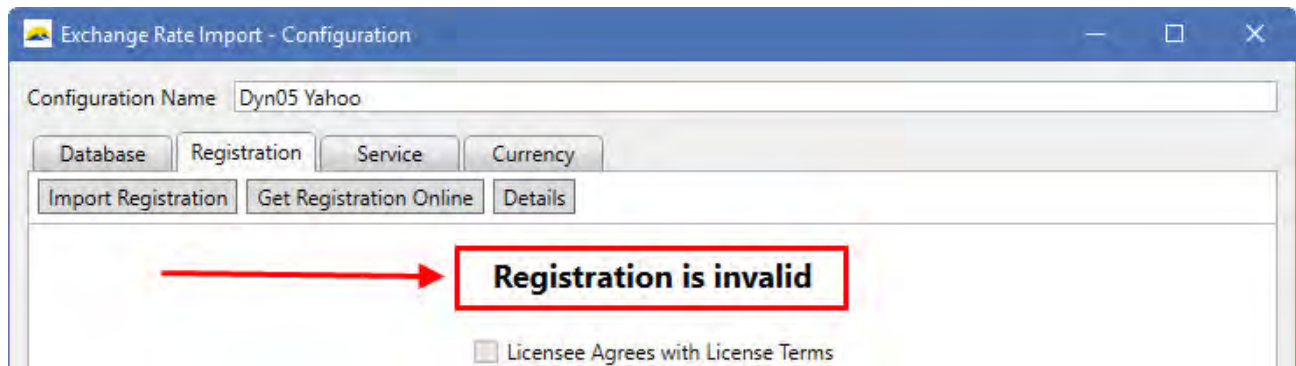
Check the “Licensee Agrees with License Terms” check box

Click Save



When manually importing the Registration it is possible to get an error:

In the event that you receive” Registration is invalid“ message –Click on the Details button

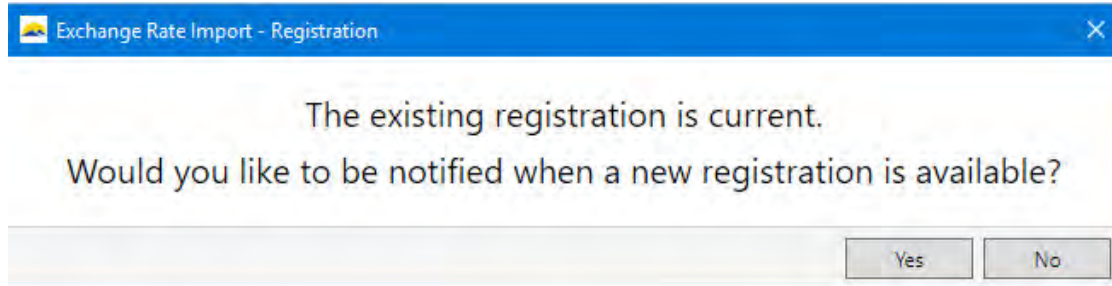


Send a screen shot of the Details window to either your Service Provider or contact Olympic Systems for assistance.

Exchange Rate Import - Registration Details		
	From Registration	From Program
Registration Type	4.3	4.3
Product Name	Exchange Rate Import for Microsoft Dynamics GP	Exchange Rate Import for Microsoft Dynamics GP
Site Name	Two, Inc.	Two, Inc.
Version	14	16
Exchange Rate Source	Yahoo	
Renewal Date	6/7/2019	
Expiration Date	7/7/2021	

Get Notified Section

If the existing registration is current, the user will receive be asked if they want to be notified when a new keys is available

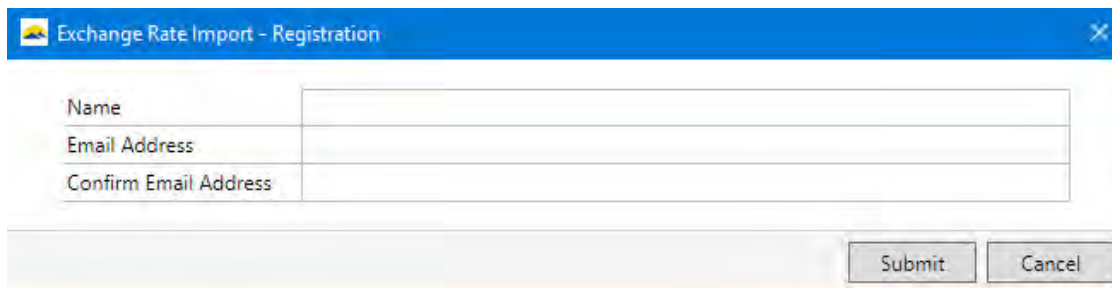


Exchange Rate Import - Registration

The existing registration is current.
Would you like to be notified when a new registration is available?

Yes No

The user should complete this form or click cancel if notification is not needed.



Exchange Rate Import - Registration

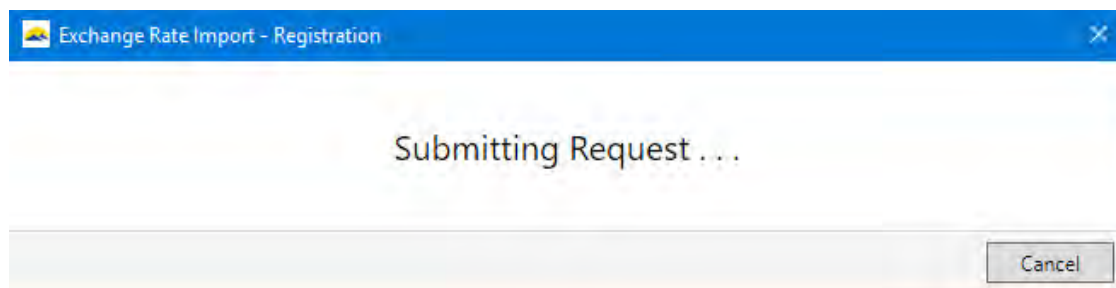
Name

Email Address

Confirm Email Address

Submit Cancel

The users request will be submitted

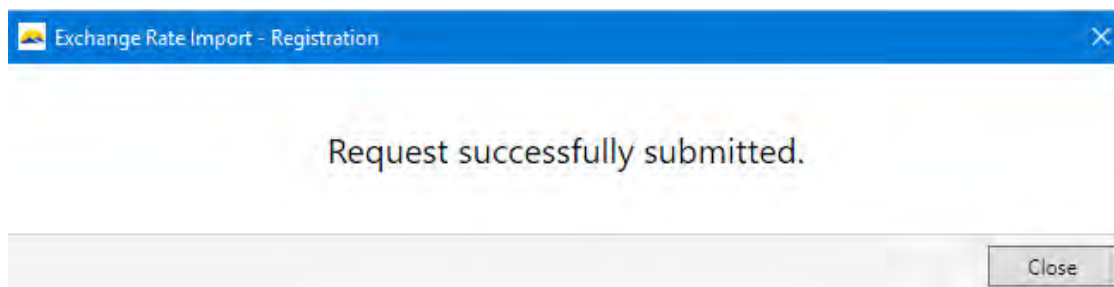


Exchange Rate Import - Registration

Submitting Request ...

Cancel

And the user will receive this message confirming the request was successful



Exchange Rate Import - Registration

Request successfully submitted.

Close



This Completes the Configuration step for Exchange Rate Import.

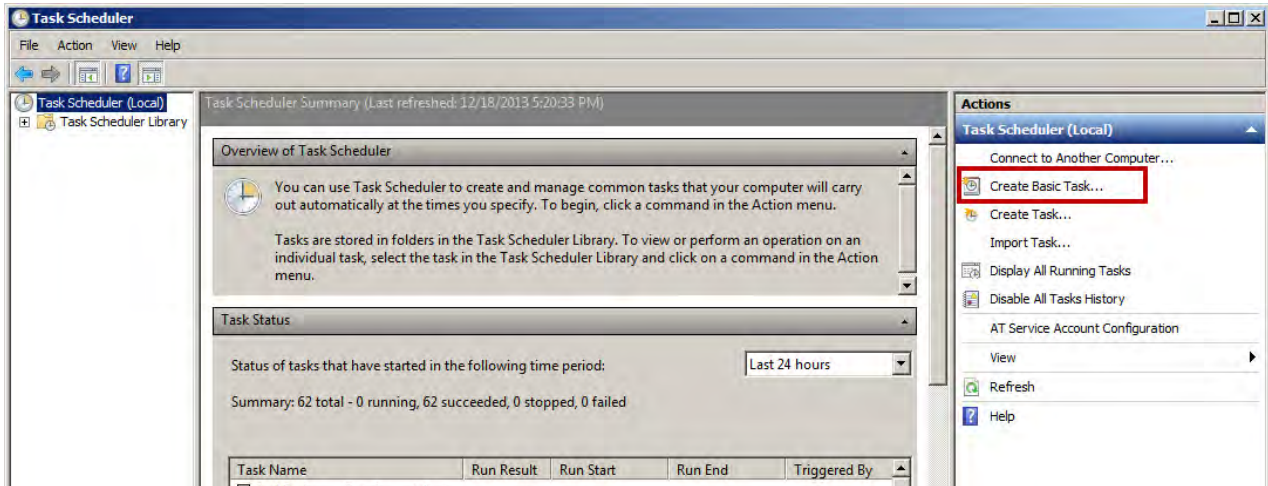
Chapter 4: Scheduled Task Setup

Scheduled Tasks

You must be logged on as an administrator to perform these steps.

Open the Task Scheduler

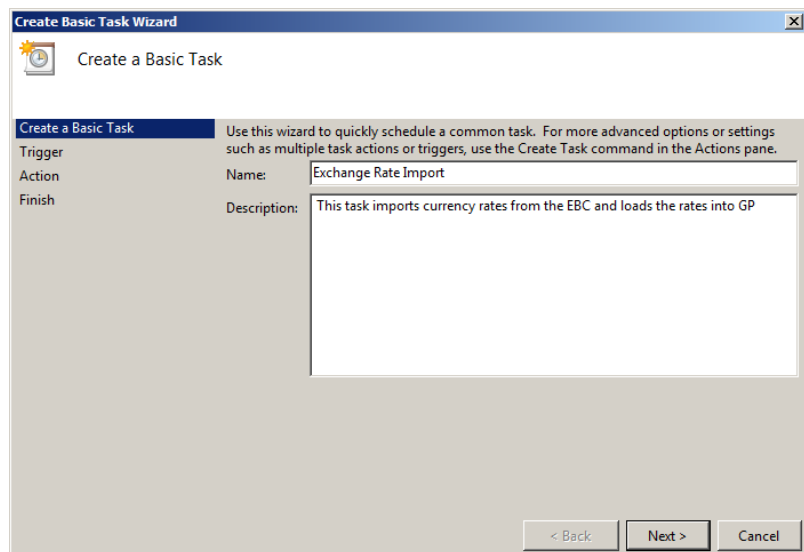
- Click the **Start** button , clicking **Control Panel**, clicking **System and Security**, clicking **Administrative Tools**, and then double-clicking **Task Scheduler**.  If you're prompted for an administrator password or confirmation, type the password or provide confirmation.



- Click the **Action** menu, and then click **Create Basic Task**.

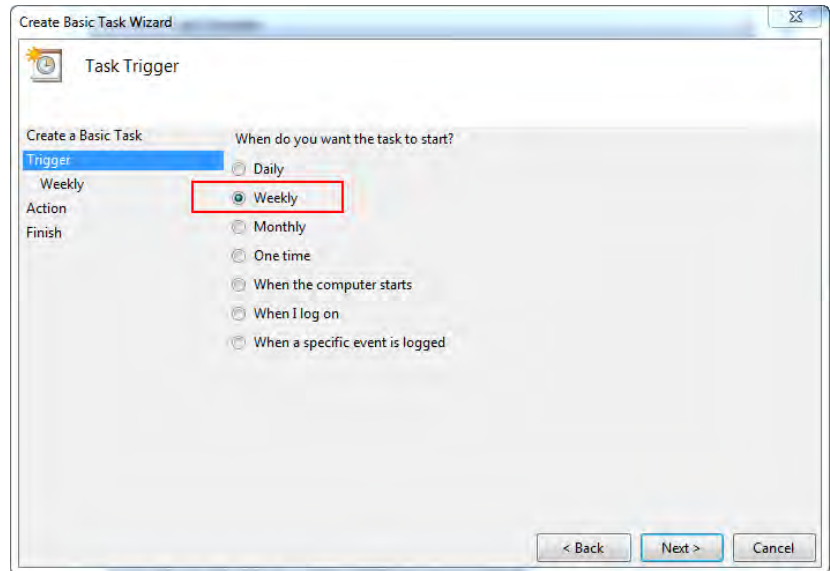
Create a Basic Task Window

- Type a **Name** for the task and an optional description
- Click **Next**.



Task Trigger window

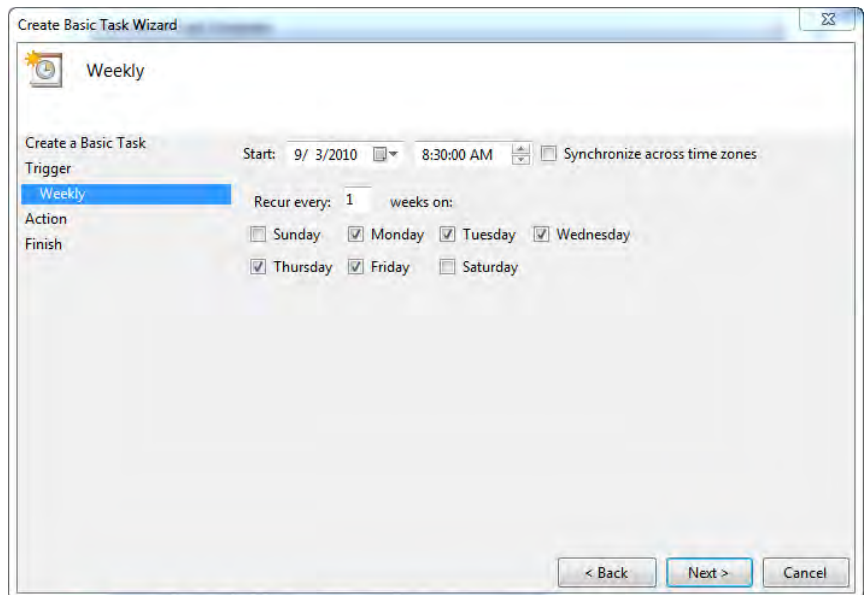
- **Click Weekly**



- **Click Next.**

Weekly window

- **Select a Start Time:**
 1. After 10:30 am Eastern Time for the European Central Bank.
Note: The ECB from time to time post their rates late and we will often recommend that users setup a second scheduled tasks about 30 minutes after the first one. If the posting are late the second task will pick up the rates. If rates have already been updated the software will skip over the second update.
 2. After 4:30 pm Eastern Time for the Bank of Canada
 3. Any time for Commonwealth Foreign Exchange and Yahoo Finance
- **Check** the Monday, Tuesday, Wednesday, Thursday and Friday Check Boxes

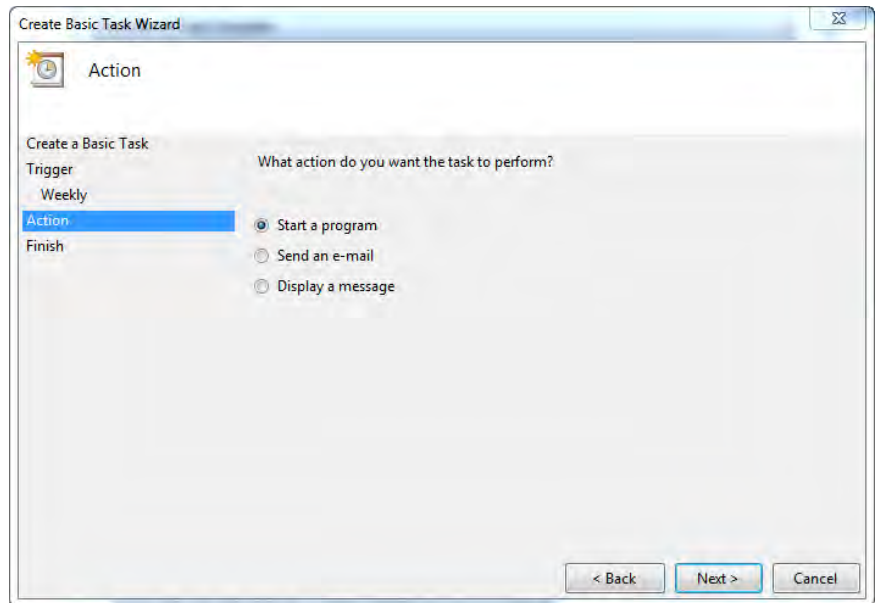


- **Click Next.**

Action window

- Select **Start a program**

- Click **Next**.

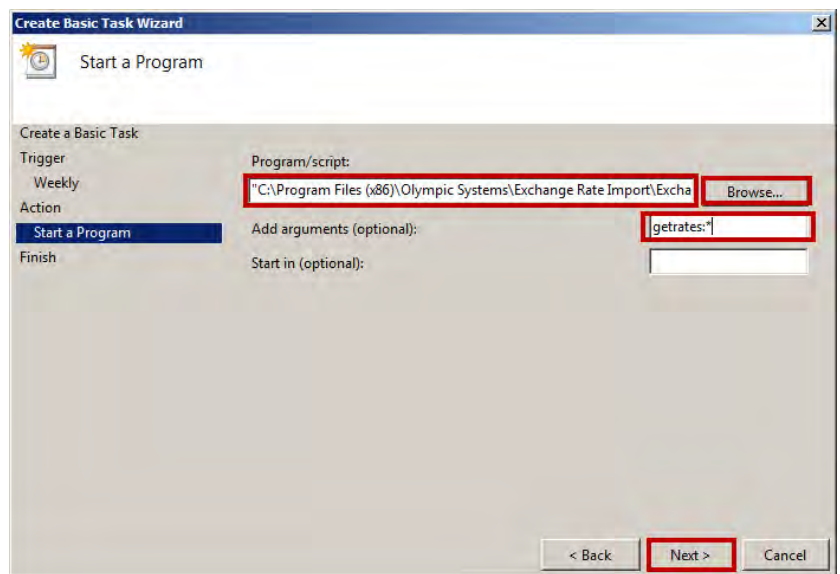


Start a Program Window

- Click **Browse** to find the ExchangeRateImport.exe program

By default this is located in **c:\Program Files (x86)\Olympic Systems\Exchange Rate Import**

- Add Arguments: **getrates:***



Arguments Options:

If you want to do import all configurations then: **getrates:***

If you want to do one then: **getrates:ConfigurationName**

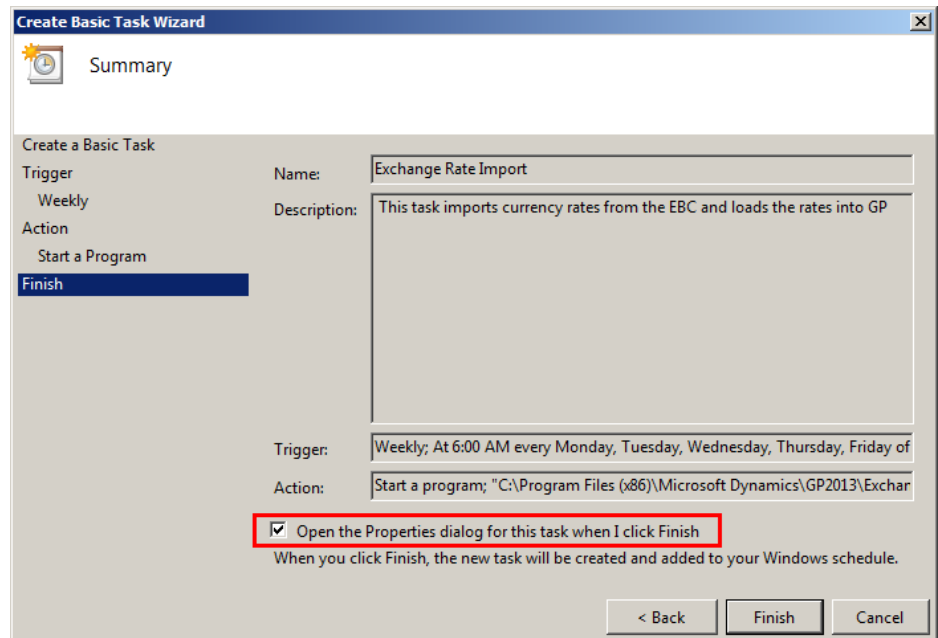
If the configuration name has a space in it then: **getrates:"Configuration Name"**

If you want to do two or more but not all then: **getrates:"Configuration One" getrates:ConfigurationTwo**

- Click **Next**.

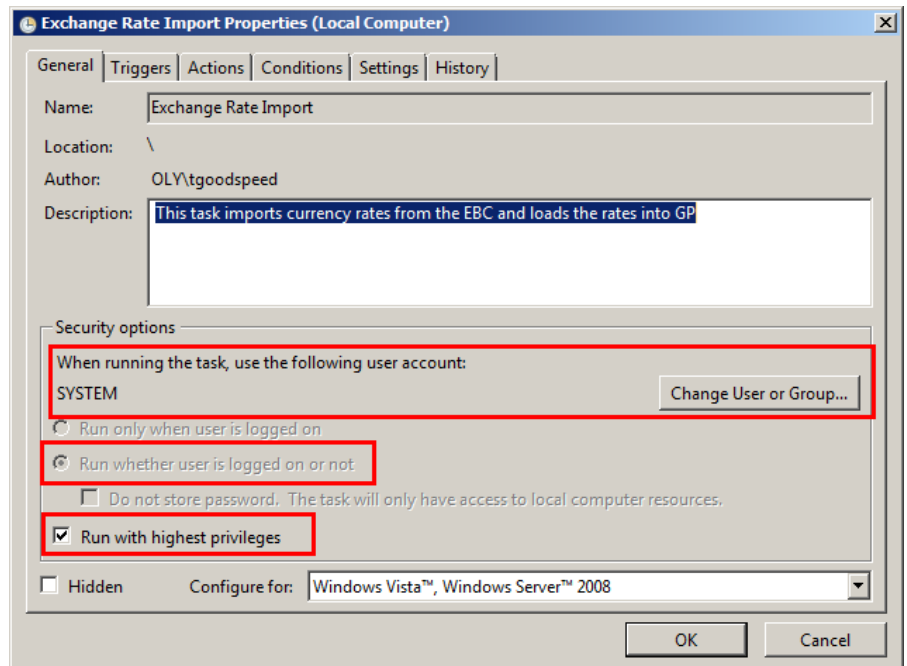
Summary window

- Check the **Open Properties** dialog check box
- Then **Click Finish**.



In the General Properties tab:

- Click the Run whether user is logged on or not.
- Check the Run with Highest Privileges
- Change the User Account to a SYSTEM account.
- Make sure the SYSTEM account has permissions to the Exchange Rate Import sub-directory
- Then **Click OK**



This completes the Scheduled Task Setup process.