

Rockton Software Report Engine build 1.0.0.13

Released July 21, 2016

Overview

This build of the Rockton Report Engine is being released primarily to address the 75-print job limitation of later versions of the Crystal Reports components, which have been used in Dynamics Report Manager builds for some time. Typically, running a Batch Report that results in more than 75 report instances causes errors such as the following:

The maximum report processing jobs limit configured by your system administrator has been reached.

This issue is described in more detail in this [Knowledge Base article](#).

NOTE: *This fix will only apply to Crystal Reports that are being saved to a file or being sent to a printer. If you need to have your Batch Report output a large number of reports to the viewer, you may still experience the issue described above.*

To Which Builds Does This Release Apply?

If Dynamics Report Manager is NOT YET INSTALLED on a given computer, then you should [download](#) and install the latest complete build of Dynamics Report Manager for your version of Dynamics GP. Then perform a normal install as described in the Dynamics Report Manager Manual.pdf that is included in that download. The current builds for Dynamics GP 10.0, 2010, 2013, 2013 R2, 2015, and 2016 on our website will contain this update, so you do not need to apply this patch release separately after installing a complete build.

However, if you currently have any of the following builds of Dynamics Report Manager already installed on a computer, you can simply apply this patch as described in [Installation Instructions](#), below.

- 10.0.21 10.0 build 21 and later
- 11.0.12 2010 build 12 and later
- 12.0.2 2013 build 2 and later
- 12.0.1004 2013 R2 build 1004 and later (all 2013 R2 builds)
- 14.0.1 2015 build 1 and later (all 2015 builds)
- 16.0.1 2016 build 1 and later (all 2016 builds)

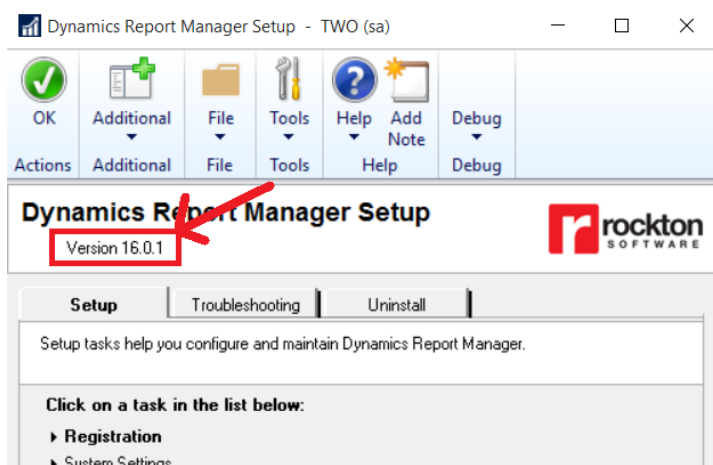
Basically, if you are currently running with RocktonReportEngine.exe version 1.0.0.9, then you can update to this build using the instructions in the following section.

If you have an earlier build of that component, or of Dynamics Report Manager, then you must update to the most recent build of Dynamics Report Manager in order to obtain this fix.

How Do I Determine Which Build I Am Currently Using?

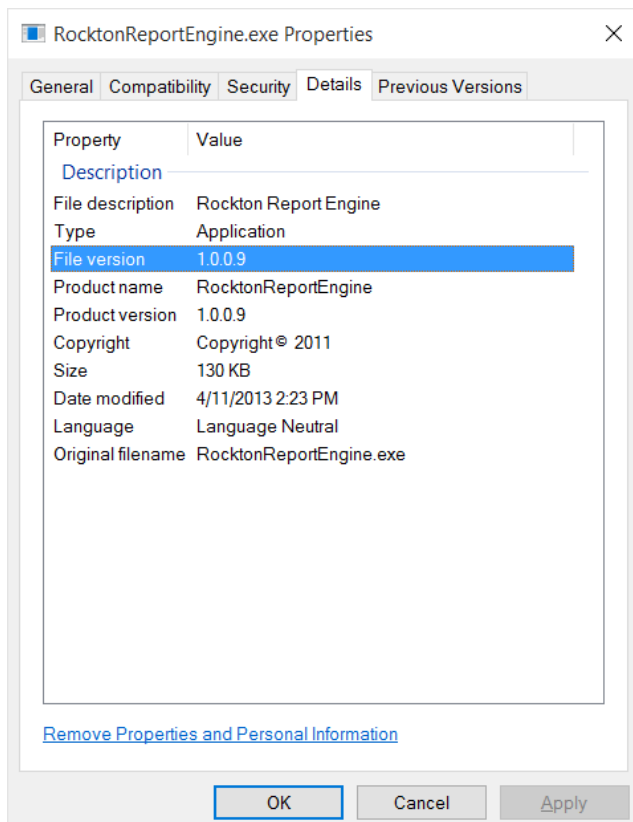
Determining Your Dynamics Report Manager Build

Log on to Dynamics GP and go to Tools > Setup > Dynamics Report Manager > Dynamics Report Manager Setup. You will see the build number in the white box at the top of the window:



Determining Your Rockton Report Engine Build

Open Windows Explorer and navigate to the location where you have installed Dynamics GP. Find the file called RocktonReportEngine.exe and right-click it. Choose **Properties** from the menu. Click the **Details** tab on the RocktonReportEngine.exe Properties dialog. The File Version will show the build you are currently using:



Installation Instructions

NOTE: *These instructions will need to be performed on each computer where Dynamics GP and Dynamics Report Manager are installed.*

1. Exit Microsoft Dynamics GP. If you are doing this in your terminal server or Citrix server, then you must have everyone log out of Dynamics GP. Or at the very least, make sure nobody is using Dynamics Report Manager to run any reports. Otherwise you will receive an error when trying to rename RocktonReportEngine.exe in step 4.
2. If you have not yet installed Dynamics Report Manager on this workstation, then simply [download](#) the latest complete build of Dynamics Report Manager for your version of Dynamics GP and install as you would normally. The current builds on our website will contain this update, so you can skip steps 3-5.
3. Open Windows Explorer and browse to the location where you have installed Dynamics GP.
4. Rename the file RocktonReportEngine.exe so that you have a backup copy.
5. Inside the RocktonReportEngine.1.0.0.13 zip file you will find an updated copy of RocktonReportEngine.exe. Extract this file to the GP install folder you found in step 3.

What Has Changed with This Release?

- The Crystal Reports 75-print job limit described in the [Overview](#) section above should be resolved, as long as the report that is being run has a Destination of File or Printer.
- The Rockton Report Engine viewer has been redesigned so that reports that have a Destination of Viewer or Window will have slightly more space allocated to the report output.
- Batch Reports will display more quickly now because the tree at the left of the report viewer will no longer close and reopen as each instance of the Batch Report is processed.
- A numeric prefix has been added to each report instance when running a Batch Report.
- When in Debug Mode, the button that used to appear at the upper-right of the report viewer will now appear at the bottom of the tree on the left. In addition, the button label was shortened from **Display Report** and **Report Definition** to just **Display** and **Definition**.