



# Version Pro

For Dynamics GP 10.0  
Documentation dated December 28, 2009

12/28/2009

**Copyright**

Manual copyright © Rockton Software, Inc.

Printed in U.S.A.

All rights reserved.

No part of this document may be reproduced, stored or transmitted in any form or by any means without prior written permission of Rockton Software, Inc.

Unless otherwise noted, all names of companies, products and persons contained herein are fictitious and are used solely for documentation of this product.

**Trademarks**

Rockton Software® is a trademark of Rockton Software, Inc.

Dynamics GP®, Great Plains® and associated products are trademarks of Microsoft® Corporation, Inc.

Crystal Reports® is a registered trademark of Crystal Decisions®, Inc.

Windows® versions are trademarks of Microsoft® Corporation, Inc.

Other company or product names mentioned may be trademarks or registered trademarks of their respective holders.

**Limitation of Liability**

Information in this document is subject to change without notice. Neither Rockton Software nor anyone involved in the creation, production or delivery of this documentation shall be liable for any indirect, incidental or consequential damages, including but not limited to any loss of anticipated profit resulting from the use of this documentation.

**License Agreement**

Use of this product is covered by a license agreement provided by Rockton Software, Inc.

# SOFTWARE LICENSE AGREEMENT

Carefully read all the terms and conditions of this Agreement prior to installing software. Do not activate this software until you have read this entire Agreement. Installing this software indicates your acceptance of these terms and conditions.

If you do not agree to these terms and conditions, then return the software and other components of the software package of this product to the place of purchase and your money will be refunded. If you downloaded this software in its demonstration form and you do not agree to the terms of the license, you may retain the software only in its demonstration form solely for the purpose of passing on the demonstration software to another prospective buyer. No refunds will be given for products downloaded off of the Internet that have been registered and activated.

1. **LICENSE:** You are granted a personal, nontransferable, and nonexclusive, license to use the enclosed software, under the terms stated in this Agreement. Title, copyright and ownership of the software and any and all related documentation remains with Rockton Software, Inc. (Rockton Software). This software and related programs may be used only on a single site licensed for use of Microsoft Dynamics GP, for the number of concurrent users as provided for in the original Microsoft Dynamics GP Software registration and purchase. Registration keys can be obtained directly from Rockton Software, if applicable. You may not distribute copies of the registered and activated software or any of the associated documentation to others. The demonstration version of the software may be distributed freely. You may not modify, reverse engineer, de-compile, disassemble or translate the software or related documentation without the prior written consent of Rockton Software, INC.
2. **BACKUP:** You may make backup copies of this software solely for your own use. You must reproduce and include the copyright notice on the backup copies. If all or any portion of this software is included in other software packages, then the copyright notice must appear on these other materials.
3. **TRANSFER:** You may not transfer this software to any other party. There are no provisions whatsoever for any other transfer, operation, or use of the software by any other party whatsoever except for the original buyer of the product that has been registered with the Rockton Software at the time of original purchase and software activation.
4. **LIMITED WARRANTY:** Rockton Software warrants for a period of thirty days (30 days) from the date of receipt, that the software covered by this agreement will perform substantially in accordance with the accompanying written documentation. You assume the entire risk as to the results and performance of the software. This warranty gives you specific legal rights and you may also have other rights that vary from state to state. Rockton Software makes no claim in regard to the merchantability or suitability for any specific purpose of this or any other software product.
5. **ACKNOWLEDGMENT:** By activating, and using this product you acknowledge that you have read this agreement, understand it, and agree to be bound by its terms and conditions. You also agree that this agreement is the complete and exclusive statement of agreement between the parties and supersedes all proposals or prior agreements, verbal or written, and any other communications between the parties relating to the subject matter of this agreement.
6. **REMEDIES:** Rockton Software's entire liability and your exclusive remedy shall be at the option of Rockton Software, either (a) return of price paid or (b) repair or replacement of the software that does not meet the limited warranty and is returned to Rockton Software. If you have need of service or help regarding this software, you should contact the dealer through which the software was originally purchased. There is no obligation to render assistance to you if you are not the owner under which the software is registered, or if the registered user has not purchased a recognized support plan from the vendor of this product. The laws of the State of Idaho will govern this Agreement.

# Rockton Software Version Pro

## Table of Contents

Copyright .....	2
SOFTWARE LICENSE AGREEMENT .....	3
Introduction.....	5
What's in This Manual.....	6
Customer Technical Support.....	7
Installation .....	8
Removing Version Pro .....	9
Navigation.....	10
About Version Pro window.....	11
Version Pro Registration window .....	12
Version Pro Setup window.....	13
Version Pro System Settings window.....	14
Version Pro Product Maintenance window.....	17
Version Pro Login Log Inquiry window .....	21

## Introduction

Rockton Software is pleased to bring Version Pro to the Microsoft Dynamics GP community. Version Pro is an administrative tool designed to ease the hassles of maintaining workstations on your Dynamics GP network. Because Small Business Financials is similar to Dynamics GP, it will not be referenced in this documentation. All installation and user instructions that apply to Dynamics GP also apply to Small Business Financials, unless specifically noted.

With several thousand after-market solutions for Dynamics GP available, it is inevitable that your site has several additional products installed on each and every workstation using Dynamics GP. In fact, common elements like SmartList, HR, Fixed Assets, Collections Management, and other solutions distributed by Dynamics GP require their own installation and unique product dictionary. What does this mean to a network administrator? It means you need to keep track of each and every product version for all workstations on your network.

Version Pro is designed to keep track of each product you have installed at a system level – and it takes the next step in ensuring that each and every workstation on your network is on the same version for every product. This is critical to managing your network, for if one user is using an outdated version of one product, data corruption and downtime can result.

Version Pro verifies upon login that all products required by the system are loaded and are on the current version. Optional logging of incorrectly configured workstations is ideal for centralized management and control. And as a system administrator, you can force users to exit the system when they are not operating with the correct products or versions loaded.

# What's in This Manual

This manual contains the basic instructions needed for the installation and use of Rockton Software's Version Pro. You will find instructions for:

- Version Pro Installation
- Navigation
- Setting up System Options

If you do not find the information you need in the following documentation, please contact Rockton Software (see the following page).

## ***Symbols and Conventions***

To help you use this documentation more effectively, we have included the following symbols to highlight important information:



This symbol points out suggestions and important notes that assist you in installing and using Version Pro.



The warning symbol alerts you to situations in which you should proceed with caution. Notes highlighted with a warning symbol relate to information that affects your entire system—please read carefully!



The “OK” symbol points out helpful tips that can simplify the process and save time.

- Keyboard keys, specific buttons, file names and menu paths are shown in bold print, such as the **Move Right** button, the **OK** key or the **setup.exe** program.
- Window titles and captions are shown in quotes, such as the “Version Pro” window.

## Customer Technical Support

Please contact your authorized reseller for support on this product. Or, contact technical support from Rockton Software by phone at (877) 476-2586 or e-mail [support@rocktonsoftware.com](mailto:support@rocktonsoftware.com). You can also visit [www.rocktonsoftware.com](http://www.rocktonsoftware.com) for more information on Rockton products, including a Frequently Asked Questions section.

User input into improving this product or constructive feedback is greatly appreciated.

If you have registered your Version Pro product, support is available depending on the support plan agreement you purchased. Your first line of support should always be your Microsoft Business Solutions reseller.

As always, technical ideas and user input is highly encouraged. At Rockton, we want to hear your input. So drop us a line whenever you feel like it. Enjoy!

# Installation

1. From the first computer you wish to install Version Pro, copy the **VersnPro.cnk** file included in the downloaded or unzipped software into your local Dynamics GP installation folder.
2. Include the new chunk file code by launching Dynamics GP.

The following message will appear: “New code must be included in the DYNAMICS.SET dictionary. Do you wish to include new code now?” Click **Yes** and a progress bar will display the status of the integrating process until the login window appears. Note that for Small Business Financials, or certain versions of Dynamics GP, this message may not appear.

This process will modify your DYNAMICS.SET file to include information relating to the Version Pro, and the **VersnPro.cnk** file will become a **VersnPro.dic** file.

3. Log into the system as the System Administrator using the **sa** User ID. This is important for building the tables that contain data for the product.
4. Log into any company. Since Version Pro maintains data at the system level, it is only necessary to install the software in one company. If you are evaluating the software and do not yet have a registration key, it is recommended that you log into the Dynamics GP Test Company. Without a valid registration key, Version Pro will not work in other companies.
5. Once you log into a company, a warning box will appear informing you that Version Pro has not been installed. Press the OK button to open the Version Pro Setup window. When the window opens, select Install/Upgrade from the task drop-down and press Process to install the product. If you do not want to install the product at this time, press Cancel to skip installation.
6. If you are not logged into the Dynamics GP Test Company, a warning box will appear informing you to that the product is not registered. Press the OK button. In the Version Pro Registration window, enter the registration key provided by Rockton Software for your site.
7. Because this is a clean installation of Version Pro, you will receive a warning that version conflicts exists. Press OK. An additional warning will inform you that no system registry entries exist, and that the system registry will be created based on this workstation. Press OK. The Version Pro Product Maintenance screen will now open.
8. Installation is now complete. Once you register the product, you can install Version Pro on all other network workstations by following steps 1 and 2 above. No further workstation-specific installation is required.

This completes the process for initial installation. See the following sections for setting system options and maximizing the features of Version Pro for your site.

## Removing Version Pro

The following describes the process for manually uninstalling Version Pro. However, note that there is now an Uninstall option on the Version Pro Setup window. This will perform all of these tasks except for step 2 of the Workstation uninstall below.

### Uninstalling Version Pro from a Workstation

Perform this process on each workstation where you want to remove Version Pro.

1. Edit the Dynamics.set file (located in the Dynamics GP installation directory) to remove the Version Pro entries. There are three steps to this:
  - a. The first line in the file should be a number. Subtract 1 from this number.
  - b. Remove these two lines:  
2565  
Version Pro
  - c. The bottom part of the file contains several path names. Remove the ones that reference the following dictionaries:  
VERSNPRO.DIC  
FRMS2565.DIC  
RPTS2565.DIC
2. Delete the following files from the Dynamics GP installation directory (you may not find all of these files):  
VERSNPRO.DIC  
FRMS2565.DIC  
RPTS2565.DIC  
Version Pro ReadMe.txt  
Version Pro Manual.pdf  
VersnPro.cnk

### Uninstalling Version Pro From the Server

Perform this process only if you want to completely remove Version Pro from the entire system.

1. Open SQL Enterprise Manager.
2. Drop all tables in the DYNAMICS database that are named VPxx, where xx is the table number.
3. Drop all stored procedures in the DYNAMICS database whose names start with zDP\_VPxxYYY, where xx is the table number.

## Navigation

Because Version Pro is designed to be an administrative tool, Version Pro windows will only appear on the Dynamics GP menus if you are logged in as 'sa' or 'DYNSA'. With the exception of the system administrator, it is unnecessary for users to navigate to any features of Version Pro.

In the event users do want to navigate to a feature of Version Pro, adding a Shortcut Bar entry is easy to do.

- Open the Shortcut Bar
- From the Shortcut Bar, press the **Add** button. Choose **Other Window...** from the drop down.
- Select Version Pro in the Add Window Shortcut window. Navigate to the window that you want to access and then press the **Add** button.
- Press the **Done** button.

## About Version Pro window

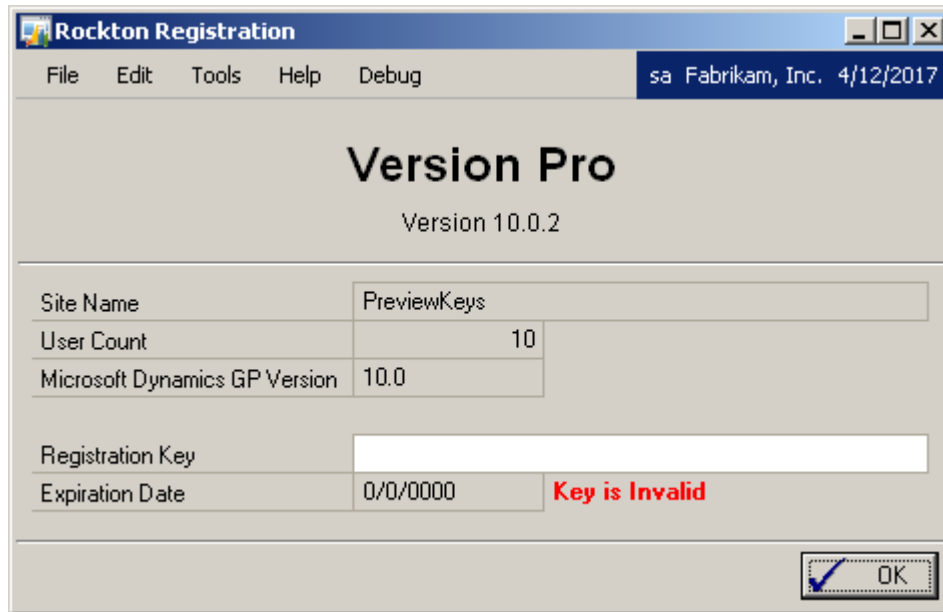


You can get to this window by first going to Help > About Microsoft Dynamics GP... From the Additional menu, choose About Version Pro.

### Description

The About Version Pro window shows the version of Version Pro that you have loaded, along with the phone number to use to contact Rockton Software, and a link to our website. In addition, it also provides a convenient means of navigating to the Version Pro Registration window.

## Version Pro Registration window



You can get to this window in one of two ways:

- Go to Help > About Microsoft Dynamics GP and choose Additional > About Version Pro. Then choose the Register button.
- OR -
- Go to Microsoft Dynamics GP > Tools > Setup > Version Pro > Version Pro Setup. From the drop-down, choose Registration and choose the Process button.

### Description

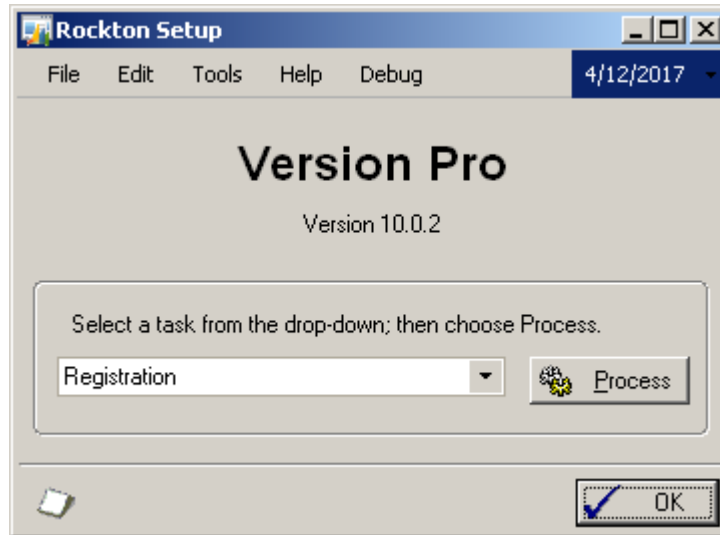
You can enter your registration key into the Version Pro Registration window once you have registered your product. The registration key will need to be entered only once for a network. Any number of users can use Version Pro at a Site, and it does not matter if some users are using Version Pro and some are not.

After entering your key, just tab off the Registration Key field. If your key is valid, a “Thank You” message will be displayed. If not, you will see the words **Key is Invalid** to the right of the Expiration Date.

If you are told that your keys are invalid, first verify that you have not mistyped anything. If you received your keys in an email, it may be helpful to copy the keys from the email and paste them into the Registration Key field to avoid typing mistakes. If you still see this message, contact Rockton Support to verify that your Site Name, User Count and Dynamics GP version have not changed since you got your keys. If necessary we will generate new keys and resend them to you.

# Version Pro Setup window

The Version Pro Setup window allows you to perform miscellaneous setup and maintenance tasks.



To get to this window, go to Microsoft Dynamics GP > Tools > Setup > Version Pro > Version Pro Setup while logged on as the System Administrator ('sa') User ID.

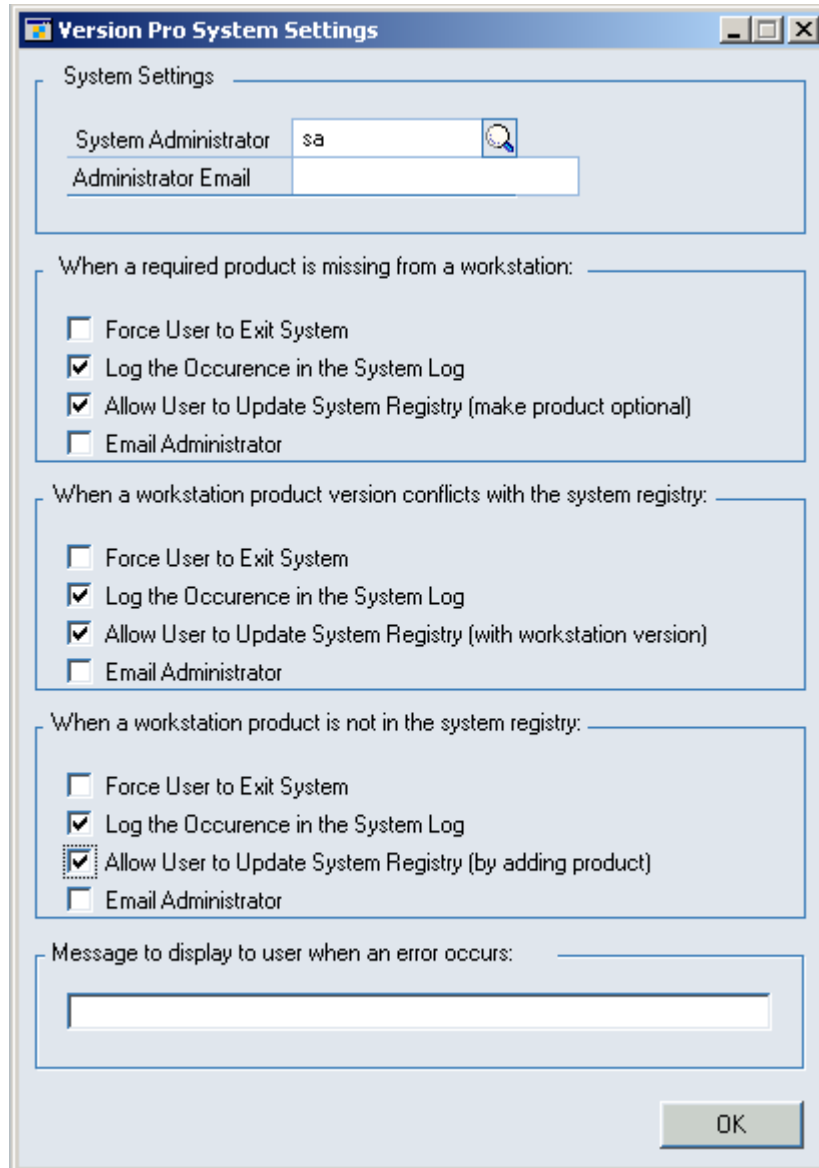
## Description

The task drop-down is used to select which task you want to perform. Once you have selected a task, choose the Process button. The tasks available are described in the table below:

Install/Upgrade Version Pro	Installs the software, or upgrades it from a previous version. This may take several minutes. It will also set table permissions to all users in the system database. You can perform this task multiple times without causing any problems.
Registration	Opens the window where you will enter a registration key.
System Settings	Opens the Version Pro System Settings window so that an administrator can configure the functionality of Version Pro.
Log Inquiry	Opens the System Log window, a listing of problems encountered by users logging into Dynamics GP. You can use this list to assist with troubleshooting and administration of your Dynamics GP network.
Uninstall Version Pro	Tables will be removed from the database and Version Pro will be removed from the launch file.

# Version Pro System Settings window

The Version Pro System Settings window allows the system administrator to specify actions users can take when encountering problems with product version on their workstations.



To get to this window, go to Microsoft Dynamics GP > Tools > Setup > Version Pro > Version Pro Setup while you are logged on using the System Administrator ('sa') User ID. Select 'System Settings' from the task drop-down; then choose Process.

## Description

The following is a description of each of the options on this window:

### **System Administrator**

A System Administrator must be a valid Dynamics GP user. This is typically the **sa** user. Only one user ID can be the System Administrator for Version Pro. When logged in as the System Administrator, certain additional functions and features become available.

### **Administrator Email**

If any of the “Email Administrator” checkboxes are checked, a report will be sent to this email address when a version conflict occurs. This field is optional.

### **When a required product is missing from a workstation**

Products can be marked as optional or required in the system registry. If a user logs in and does not have a required product installed at their workstation, Version Pro will detect it. Select what you would like to occur from the following options:

<b>Option</b>	<b>Explanation</b>
Force User to Exit System	If the user is unable to resolve the conflict (which is likely since they are missing a product), checking this box will force the user to exit the system until they correct the problem. However, Version Pro will inform the user what the problem is and give them opportunity to fix the problem on their own.
Log the Occurrence in the System Log	Record this incident in the system log.
Allow User to Update System Registry (make product optional)	Checking this box will enable a user to determine for himself or herself that the product they don't have loaded is indeed an optional product, and therefore not necessary for them to have. Checking this box will allow them to update the system registry entry for the specific product not loaded at their workstation. It will only update the Optional status for that product.
Email Administrator	Emails the Administrator containing incident details when Version Pro detects a conflict.

### **When a workstation product version conflicts with the system registry**

For a given product, such as SmartList, the system registry may have version 7.5.4 while the workstation from which the user logs in has the older version 7.5.3 loaded (or even a newer version such as 8.0.1). Version Pro will detect these version conflicts. Select from the following options of what you would like to occur in this scenario:

<b>Option</b>	<b>Explanation</b>
Force User to Exit System	If the user is unable to resolve the conflict (which is likely since they usually need to exit the system and load the current version), checking this box will force the user to exit the system until they correct the problem. However, Version Pro will inform the user what the problem is and give them opportunity to fix the problem on their own.

Log the Occurrence in the System Log	Record this incident in the system log.
Allow User to Update System Registry (with workstation version)	Checking this box will enable a user to determine for himself or herself that the specific product in question that they have loaded is indeed the correct and current version. Checking this box will allow them to update the system registry entry for the specific product in question. It will only update the major, minor, and build numbers for the product, overwriting the system registry with the values loaded at the workstation.
Email Administrator	Emails the Administrator containing incident details when Version Pro detects a conflict.

***When a workstation product is not in the system registry***

Products in the system registry can be marked as optional or required. If a user logs in and does not have a required product installed at their workstation, Version Pro will detect this. Select from the following options of what you would like to occur in this scenario:

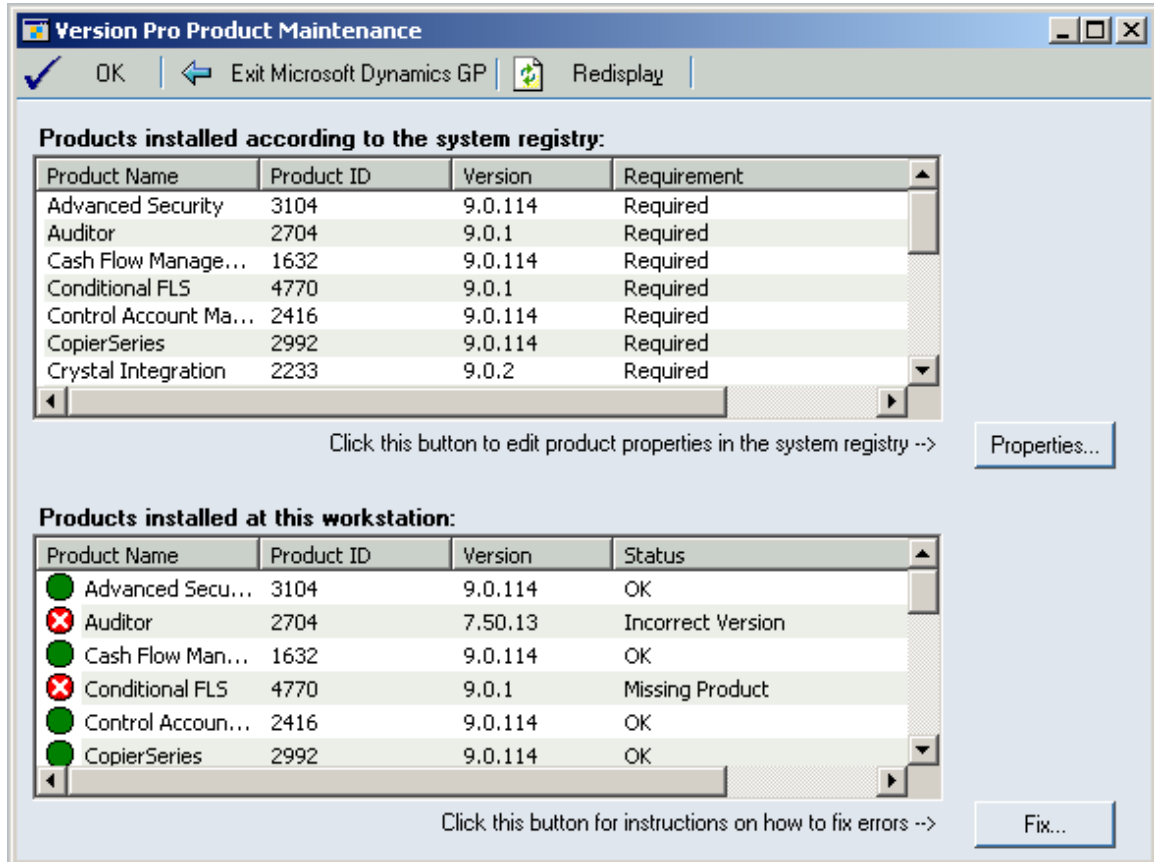
Option	Explanation
Force User to Exit System	If the user is unable to resolve the conflict checking this box will force the user to exit the system until they correct the problem. However, Version Pro will inform the user what the problem is and give them opportunity to fix the problem on their own.
Log the Occurrence in the System Log	Record this incident in the system log.
Allow User to Update System Registry (by adding product)	Checking this box will enable a user to determine for himself or herself that the product they have loaded at the workstation is new and needed on the network. Checking this box will allow them to update the system registry by adding a new entry for the new product loaded at their workstation.
Email Administrator	Emails the Administrator containing incident details when Version Pro detects a conflict.

***Message to display to user when error occurs***

This message is displayed to the user when Dynamics GP is started and Version Pro detects a version conflict. If this field is left blank, the default message will appear. This field is optional.

# Version Pro Product Maintenance window

This opens the Product Maintenance window, the primary interface of Version Pro.



To get to this window, go to Microsoft Dynamics GP > Tools > Setup > Version Pro > Products while you are logged on using the System Administrator ('sa') User ID.

## Description

The Version Pro Product Maintenance screen shares a wealth of information about the products loaded at this workstation and products entered into the system registry. This is the same window that will open at user workstations when there are version conflicts at login. As an administrator, you may wish to edit system registry entries using this window.

The following is a description of each of the options on this window:

### **OK button**

Closes the Version Pro Product Maintenance window. If there are still products listed that have version conflicts, you will be asked to confirm that you want to exit without first resolving these conflicts.

### **Exit Microsoft Dynamics GP button**

Closes the entire Dynamics GP application.

### **Redisplay button**

Reloads both areas of the window with what is currently installed on this workstation and what is currently stored in the system registry

### **Products installed according to the system registry**

This section lists products which are entered in the system registry of Version Pro. The list can be sorted by Product Name, Product ID, Version, or Required Status.

Below the list is a caption pointing to the Properties button which will enable a user to edit or view properties for a specific product.



You must be logged in as the System Administrator to see the Properties button, or the System Settings option must be enabled for **Users Can Edit System Registry**.

To edit properties of a specific product, highlight the product in the list and press the Properties button. The following Product Properties window will open:

Module	Major	Minor	Build
1	7	50	13
2	0	0	0
3	0	0	0
4	0	0	0
5	0	0	0
6	0	0	0
7	0	0	0

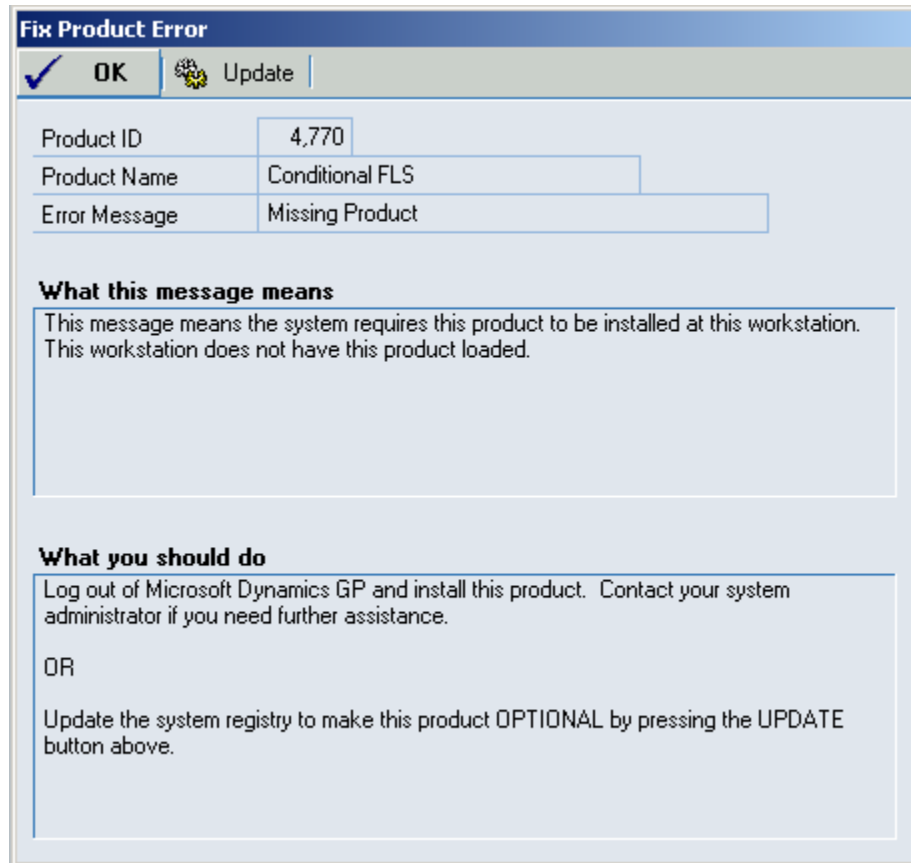
The following is a list of the options available on this window:

Option	Explanation
OK	Close the window and save any changes.
Delete	Deletes this product from the system registry, meaning no users should have the product loaded at any workstation.
Cancel	Close the window but discard any changes.
Product ID	This is the ID assigned to the loaded product as determined by the product provider. Microsoft Business Solitions issues Product Ids to Solution Providers so that each product solution is unique in the Dynamics GP community.
Product Name	This is the name assigned to the loaded product as determined by the product provider. This name also appears in the Dynamics GP launch file. For more information on the launch file, consult Dynamics GP documentation.
Registered Module Number	A module is Dynamics GP's way of subdividing a product into distinct areas, such as the General Ledger module, the Receivable module, and so on. In the past, these modules had distinctive numbering schemes. The module used by Dynamics GP for the core product is 66. Other solution providers can choose their own module number when they create their product. Version Pro cycles through all modules and uses the first module found to contain a Major, Minor, or Build number. It is unlikely you will ever have to modify this number. For more information about which module a product uses, contact the provider of that product.
Major Version Number	Each time a product provider releases an update of their product, a Major, Minor, and Build number is stamped on the product dictionary to track version information. This is the key tracking mechanism of Version Pro. Version Pro reads these version numbers from the product dictionaries loaded at the workstation.
Minor Version Number	Typically, product providers follow the Major and Minor versions of Dynamics GP products in their own products. For instance, if Dynamics GP is on version 5.5, the Major and Minor version number for a compatible product is often 5 and 5 and well.
Build Version Number	The most likely variable in an installed dictionary, the build number typically refers to the providers tracking number for releases with this Major and Minor version.
Optional Product	Some products are optional at workstations, such as Rockton Software's SmartFill (a really awesome product – try it!) Checking this box for a system registry entry keeps Version Pro from checking for this product on other workstations.
Module Numbers	In the rare case that Version Pro does not default to the correct module, double-click the correct module, and the Major Version Number, Minor Version Number, and Build Number will be inserted in the appropriate fields automatically.

**Products installed at this workstation**

This section lists products and their versions which are currently loaded at the workstation. The list can be sorted by Product Name, Product ID, Version, or Status. The Status column indicates if a product is loaded correctly and on the correct version. A correctly loaded product will display a green light next to the Product Name. Any products with version conflicts will have yellow or red lights next to them with a description of the problem.

Below the list is a caption pointing to the Fix button which will give specific instructions to a user on how to fix problems with products they have loaded. To fix a version conflict, highlight the product in the list and press the Properties button. The following Fix Product Error window will open:

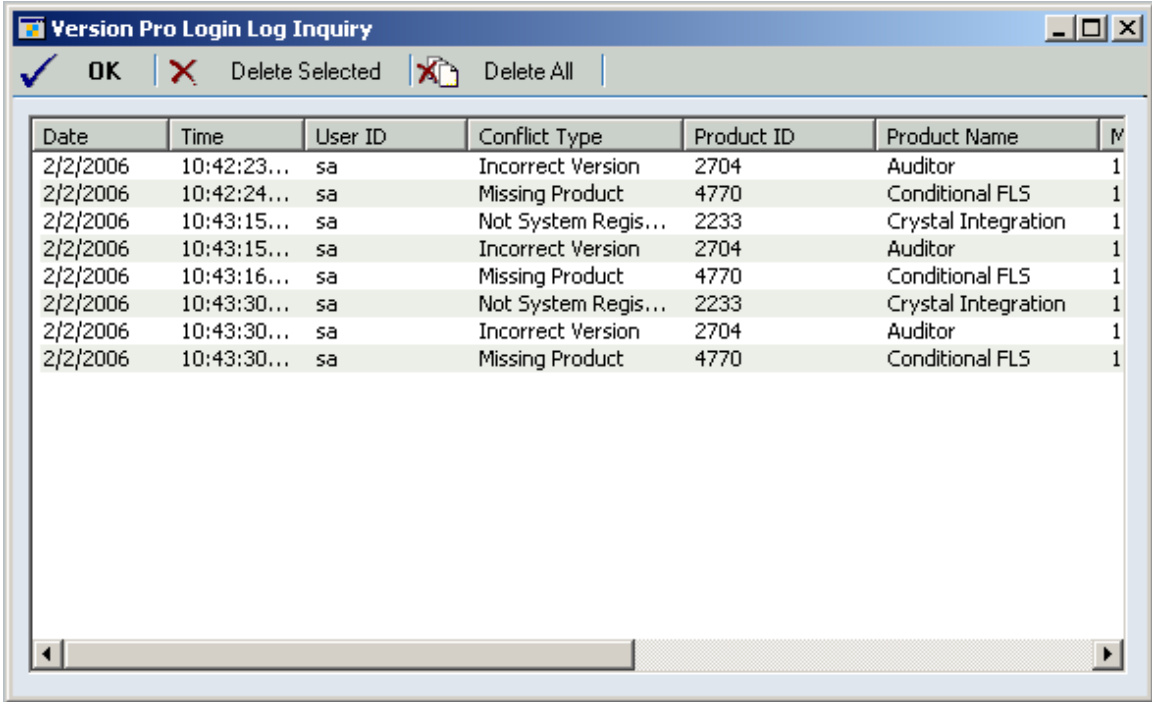


The following is a list of the options available on this window:

Option	Explanation
OK button	Closes the window without making any changes.
Update or Add button  <i>Note: The caption displayed on this button depends upon the Error Message displayed.</i>	Action taken depends upon the Error Message displayed: <b>Missing Product:</b> Updates the system registry to indicate that this product is OPTIONAL. <b>Not System Registered:</b> Adds product to the system registry. <b>Incorrect Version:</b> Updates the system registry with the version of the product that is loaded on your workstation.

# Version Pro Login Log Inquiry window

This is where all version conflicts can be viewed by the System Administrator.



To get to this window, go to Microsoft Dynamics GP > Tools > Setup > Version Pro > Version Pro Setup while you are logged on using the System Administrator ('sa') User ID. Select 'Log Inquiry' from the task drop-down; then choose Process.

## Description

Login Log Inquiry is designed for a System Administrator to track conflicts users are having with products. The log records the date and time of the conflict, the user who had the conflict, the conflict type, and the product information for the product loaded at the workstation.

Option	Explanation
OK	Closes the window.
Delete Selected	Deletes selected entries in the list. You can select individual entries in the list by clicking on them. You can also use the Shift and Ctrl keys along with the mouse to multi-select several entries.
Delete All	Deletes all entries in the log.



You can enable or disable logging by using the System Settings window.